



HIGHWAY 21 GROUP

BULL SALE

MARCH 21, 2022

AT THE RANCH—HANNA, AB

EFFICIENCY VERIFIED
GENETICS

PUREBRED CHAROLAIS + SIMM/ANGUS



People, Agriculture, Progress

BULL SALE

MARCH 21, 2022

AT THE RANCH - HANNA, AB

Purebred Charolais, Simm/Angus

SALE TIME - 1:30 PM

Welcome...

Welcome to our inaugural, first of many, EFFICIENCY VERIFIED GENETICS sale. We appreciate having you here with us, The Miller Family and Highway 21 Group, for the beginning of our journey and commitment to further enhance the cattle industry, as many have done before us. We believe in using the latest technology in genetics, nutrition, data management, and the best tools the industry has introduced to measure results to further enhance the betterment of the industry with our key objectives:

1. To identify superior animals that are efficient in the production process
2. To produce beef that the industry's customers enjoy eating
3. To accomplish the above 2 objectives in a sustainable manner for all of agriculture
4. To improve the profitability of those involved in all segments of the industry

What a privilege it is to be part of this great industry and work with the people within it. The beef business has a bright future ahead of it. We are already seeing higher fall 2022 calf prices with the release of the first WLPI coverage levels for the year, despite record high grain prices. With the continued reduction in cow herds, increasing packer and feedlot capacity in North America, as well as worldwide demand on quality beef, it is just a matter of time before the cow-calf sector will be the ones capturing the current record margins per head that exist throughout the value chain.

Our history in producing offspring for sale started around 2010 when we were calving around 5000 cows between Alberta and Saskatchewan. We embarked on a quest to get the best out of the genetics we had purchased to improve their offspring to feed. With this, the start of our composite bulls was born. We wanted to have performance, marbling, and the benefits obtained through heterosis all in one package. Along the way, we always kept in check the foundations of what are the cornerstones of a functional cowherd, calving ease, feet, and udders. In 2015 we were honoured with being awarded the commercial breeder of the year for both the Canadian Angus and the Canadian Simmental Associations. At the same time, we were in search of a tool to better track information on sires and dams to aid in making informed genetic decisions, which led us to Herdtrax.

In our opinion, Charolais cross calves have always been superior in the feed yard for performance, yield, and overall grading which brought us to our first purchase of a purebred dam in 2016, LM Miss McKay 1212Y. Charolais do a tremendous job of complimenting our Simm/Angus commercial cows, and we are confident they will yours, no matter what your breed. We started by flushing extensively, at the same time purchasing numerous females from within Canada from Quebec to Alberta. This year we are excited to be breeding 250 registered cows. Our quest to find what we think are the best genetics for ourselves and you our customers took us to over 50 purebred operations last year. Just like we would hope someone would measure us on, overall attention to doing the right things to produce the seedstock was our focus. We met a ton of great people along the way, brought home a ton of knowledge and ideas and are very thankful for all the help and support we have received.

We look at this challenge as a journey that never ends as more technology will always be on the horizon. We believe in perpetual improvement and cannot wait to show you what next years bull pen looks like to compliment this one. We purchased some exciting dams and sires in the last couple of years that we are seeing great things transpire from. We are thankful that you as clients are showing your faith in us by purchasing our Bulls. We are always interested in your honest feedback and the opportunity to feed better cattle with our buy back and retained ownership programs. We are grateful for your partnership in producing beef for consumers while at the same time working together to make further improvements to capture all the efficiencies that we can to further enhance our industry.

A special thanks to Lee, Lorraine, Lacey, and Logan Miller, Wes Bott, Phillip and Megan Hofer, Joe Lofthouse, Kristi Hill and all our staff at Highway 21 Group and the Hanna ranch for helping us achieve this milestone.

Highway 21 Group
Ed, Linda, Lyle, Amanda, and Shannon



www.highway21group.com



SALE DAY INFORMATION

AUCTIONEER...

Chris Poley T Bar C Cattle Co. Ltd. 306-220-5006

SALE STAFF...

Ringmen

Shane Michelson T Bar C Cattle Co. Ltd. 403-363-9973
Ben Wright T Bar C Cattle Co. Ltd. 519-374-3335

SALE DAY PHONES...

Shane Michelson T Bar C Cattle Co. Ltd. 403-363-9973
Ben Wright T Bar C Cattle Co. Ltd. 519-374-3335
Ed Miller Highway 21 403-651-8637
Lyle Miller Highway 21 403-888-3973
Joe Lofthouse Highway 21 403-493-5288
Phillip Hofer Ranch Manager 403-363-0466

ACCOMODATIONS...

Canalta Hotel Hanna 403-854-2400
Travelodge Hanna Canada Grey 403-854-4471

SALE MANAGEMENT...



Box 2330, Warman, SK S0K 4S0
Chris Poley 306-220-5006
Shane Michelson 403-363-9973
Ben Wright 519-374-3335

ONLINE BIDDING AVAILABLE...

Internet Bidding Available

DLMS

www.dlms.ca

For more information call DLMS:
Mark Shologan 780.699.5082 or
DLMS Purebred Team 780.991.3025

SCHEDULE OF EVENTS...

10:30: Viewing of Sale Cattle
12:00 PM: Lunch
1:30 PM: Sale Begins

PLEASE SEE DIRECTIONS TO RANCH ON PAGE 56

From the Desk At T Bar...

Welcome to the premiere of "Efficiency Verified Genetics" Annual Bull sale on March 21, 2022, presented by the Highway 21 Group at the ranch headquarters, Hanna, Alberta. This feature event offers purebred Charolais yearlings and two-year-olds along with the highly maternal two-year old Simm/Angus composite bulls. This exciting new sale is a mirror for the future in the production of beef cattle in the years moving forward.

Highway 21 and the Miller family are no strangers to the livestock industry running a very efficient feedlot at Acme, Alberta. In 2010, with a very large cow herd base, they started to produce Simmental/Angus bulls and offering seedstock for sale. In 2016 the purebred Charolais herd was born with the purchase of LM Miss McKay 1212Y and over the past few years they have expanded the base by selecting some of the finest breeding females including donors to expand their embryo transfer program. In 2015, The Highway 21 Group was awarded the "Commercial Breeder of the Year" by both the Canadian Angus Association and the Canadian Simmental Association... a very well-deserved honor!

Ranch raised, the bulls are rugged, sound, full of muscle, hair and growth. We all know the impact that Charolais bulls have offered as they lead the beef industry in increased value. Yearlings and two's, these Charolais bulls will suit even the most discriminating stockmen. The Simm/Angus bulls are all two's, full of muscle, testicle, sound and athletic. These two's will cover more cows and more ground... and as a bonus they provide a high maternal/low birth weight factor... I'm sure you will keep all their daughters in future years.

Check out the finance program and the unique bull guarantee.

As you read through this catalogue, you will find that they have provided all the trait and data information on the bulls selling, along with data on their sires and dams. They would like to select the progeny from these bulls to feed, for their calf buy back and marketing program. Highway 21 is one of the few producers in North America that evaluate all their progeny and are members of the Verified Beef Production Plus. All the data at Highway 21 is listed and managed by "Herdtrax".

This new "Efficiency Verified Genetics" program complete with leadership of the Highway 21 Group, is the "way of the future" in all levels of the livestock sector from conception to carcass... it will increase both accuracy and a higher bottom line for all producers. They take the risk and guesswork out for you the customer.

Feel free to stop by the ranch any time prior the sale to preview the bulls or give Ed or Lyle Miller a call to discuss the bulls on offer and those that would suit your breeding intentions.

Plan to be with us in Hanna for Highway 21 Group 1st Annual Bull Sale whether it be with us in person, online or on the phone. We have graded the entire offering so feel free to give any of the T Bar C Team a call and we will be pleased to assist you in a professional and confidential manner with your selections.

Chris Poley

DELIVERY...

- All bulls will be delivered prior to May 1
- Free delivery in western Canada (BC, AB, SK, MB). We will try our best to bring them to your doorstep, however in some circumstances, a free delivery point close to your location may be used.
- Delivery beyond western Canada is responsibility of buyer. We may be able to delivery to a drop point in western Canada.
- \$200 off purchase of bull if you pick up yourself at the ranch prior to April 1st.

WINTERING...

Any bulls requested by buyer to stay past May 1 delivery will incur a daily cost of \$5 per day.

DISCOUNTS...

5% for 3 bulls or more

VIDEO SALE...

This is a video sale. Bulls will be sold individually instead of entering the ring. The videos will be available about 3 weeks prior to the sale on www.cattlevids.ca.

BULL VIEWING...

- Prior to sale day to view the bulls in their natural habitat
 - On sale day organized into 8-10 head similar typed groups
- We welcome the opportunity to assist you with your selection.

RIGHT TO SEMEN...

Hwy 21 reserves the right to draw semen on any bulls sold at our cost, for in herd use only, at a time convenient to the purchaser.

RETAINED INTEREST...

All retained interest in walking and semen rights/sales will be communicated on an individual bull basis prior to sale.

View the catalogue and videos online at
WWW.BUYAGRO.COM

Please bring this catalogue with you sale day.



Chris Poley
306-220-5006



Ben Wright
519-374-3335



Shane Michelson
403-363-9973



SIGHT UNSEEN PURCHASE...

If you are unable to attend you may bid Online with DLMS, contact one of the sale representatives, or have piece of mind with our Sight Unseen Purchase Program. Give us a call ahead of time with your breeding goals (CE, performance, feed efficiency, maternal, terminal etc.) and we will collaborate with you to select a bull to fit your requirements and budget. If you are not satisfied, we will refund your money.

INTEREST...

Any bill in arrears (30 days past invoice date) will be assessed an interest rate of 1.5% per month, 18% per annum, unless prior arrangements have been made with Highway 21 Group.

BULL FINANCE PROGRAM...

- Must be pre-approved prior to sale day. Call us ahead of time.
- Minimum purchase of \$6000.
- 60% down on sale day unless prior arrangements made.
- Remaining 40% plus interest due November 1st of sale year.
- Bulls branded with Hwy21 brand.
- Bill of sale and ownership transfer will be issued once bull paid in full.
- Interest rate of 5% per annum.

YEARLING AND 2-YEAR-OLD BULLS...

We are offering yearling and 2-year-old bulls. Quite simply, we cut off the age for the yearling bulls to be born prior to March 10th. Bulls offered that were born after March 10 will be 2-year-old bulls. These bulls will only be represented for sale once. **There will not be any unsold bulls rolled over to the following year.**

HWY 21 BULL GUARANTEE...

We guarantee:

- Bulls passed a semen evaluation by a licensed veterinarian prior to sale. A certificate will be available upon request.
- Bulls are structurally sound and healthy (upon delivery) and will have no issues breeding cows naturally.
- Bulls can be handled using proper animal handling skills on foot, horseback, with quads and cattle dogs. Our customer's safety is of utmost importance.
- Bulls have the fleshing ability to return to pre breeding condition prior to the next breeding season, assuming no more than a 90-day breeding season and the same start to the breeding season the next year. This can be achieved with a high-quality forage ration or diet.

We know that the most important thing is for the cows to get bred. Thus, if you have any issues with the bull, contact us immediately so we can supply another bull as quick as possible.

Your options for bull replacements are:

1. We will replace the bull with one of equal or superior quality at no additional cost.
2. Replace the bull and adjust the value agreed upon and issue you a payment for the spread.
3. If no replacement bull is needed in the same season, we will take back the bull, or take the salvage value if shipped and issue you a credit for a bull purchased in the future.

Our Guarantee covers 3 Breeding seasons

1. 100% of purchase price up to end of first breeding season (October 1, 2022)
2. 75% of purchase price up to May 1, 2023
3. 50% of purchase price up to May 1, 2024
4. 25% of purchase price up to May 1, 2025

The bull that is being replaced becomes the property of Hwy21 to salvage/sell and we require ownership transferred.

HWY 21 BULL WARRANTY...

Our Bull Warranty is meant to cover what the Guarantee does not, such as loss of use from death, sickness, or injury (structural as well as reproductive). It covers the first breeding season. We will **pay out all claims, supply another bull or issue a credit for future sales**, whichever you choose.

Terms:

- 10% of purchase price
- Decision to purchase must be made sale day
- 8-month term from March 21st to November 21st, 2022

If you have a claim:

1. Contact us immediately by phone or email.
2. Have a licensed veterinarian treat, diagnose, and complete a claim form that will be provided
3. Have a post-mortem completed by a veterinarian in the case of death.
4. When possible, return the bull back to Highway 21 Feeders.

Exclusion to Warranty:

Injury or death due to malicious, willful, or intentional acts or mistreatment by you or your employees are fraudulent claims.

The purchase of this warranty is **your choice** and completely optional. **Each animal becomes the risk of the purchaser as soon as it is sold.** Animals may be cared for at the **purchaser's risk**, cost free, relative to the terms of delivery and development.



WHAT WE OFFER

EFFICIENCY VERIFIED GENETICS...

We are one of few producers in North America that are evaluating all our progeny for feed efficiency. We have been testing using Growsafe technologies for 6 years running. The results of the Yearling Charolais bull test will be available March 15 on the web, and available sale day. See the RFI quick facts/FAQ's at the back of the catalogue.

CALF BUY BACK AND MARKETING...

At Highway 21 Feeders, we are always looking for exceptional cattle to buy and feed. We know the bulls you have bought, the traits they excel in and as well their dam and sire better than anyone.

Calf Buy Back Premium – CBP

- Exclusive to Hwy 21 sired calves from qualified bulls (identified prior to sale)
- Premium paid upfront
- Premium Grid will be available by Sept 15 and based on current feed costs, cattle prices, and slaughter programs.
- Starting price (before premium) will be the monthly (4-week) Canfax average for weight class
- Oct and Nov pricing and delivery periods. Elect your calves no later than middle of the month. Cattle must be delivered by end of the month.
- Pen space reserved for this progeny

Calf Buy Back and Marketing - CBM

- Offered on progeny from bulls without designation.
- Highway 21 will be bidders on the calves
- Highway 21 will assist ranchers to market their calves in the event we have no space in feedlot or are out of our price range.
- No pen space reserved

General Terms

- Cattle delivery will be worked out between buyer and seller
- Financing available for partnership/retained ownership in all programs
- Standard industry shrinks and price slides will apply
- Minimum of 2 weeks notice prior to when you want to market
- We may require photos if we are unable to come view the calves

Marketing Information

Every bull buyer will have access to cattle projections. They will be available at www.highway21group.com website with a password. These will assist ranchers in making marketing and feeding decision. Passwords will change yearly, and access will lapse 3 years after your last bull purchase.

Open/Cull Cow Marketing

To compliment full 360 service, if you have close to a liner load or more of open or cull cows, we will assist our bull customers in marketing them direct to slaughter, free of charge.

DATA FOR YOUR HERD...

We can only manage what we measure thus the power of knowing the data has been instrumental in our program. We have 2 options for data sharing back to your herd:

1. If you retain interest of 30% or more and feed them with us, we will upload the information collected into Herdtrax or a summary report/XL file free of charge.
2. If we have purchased your calves outright, we can supply the data back for a small administration fee.

Every effort will be made to obtain full grading data; however, some processors differ in how data is supplied. At the back of the Composite bull section, our reference sire table represents a sample of the information available from Herdtrax.

DEVELOPMENT OF BULLS...

When we are Buyers, and Sellers

When we are buying seedstock we are ALWAYS interested in the feeding program of our suppliers as it is of utmost importance in our eyes. We develop our bulls for sale in the same fashion as what we want to see when we are in the buyer's seat.

- Overfeeding of bulls can contribute to feet problems as well as permanent fertility problems
- Bulls have been on a high roughage, low energy ration
- We are proud to employ Cargill Animal Nutrition and their professional staff to aid in the management of our bull development.
- These bulls may not be carrying as much condition as your accustomed to.
- Bulls that are developed such as these should create more longevity within your herd and breed more cows.

VERIFIED BEEF PRODUCTION (VBP+)...



At Highway 21 Group, we embraced the certification process for VBP+ for both our Hanna ranch and Acme feed yard. It was an easy decision as we support their goals of transparency, accountability, and a commitment to Certified Sustainable Beef as well as adhering to industry standards for food safety, animal care, biosecurity, and environmental stewardship, which all work towards enhancing the Canadian Beef Advantage. As a seedstock producer, offspring we offer for sale start the chain of certification, and the certified animals we buy back, and finish, complete the production chain of certification. With our adoption of the program, we have received premiums for certified animals that are slaughtered. VBP+ is supported at the consumer level as well by Harveys, Loblaw's and MacDonald's to mention a few. Our commitment to the industry made our decision to become VBP+ certified an easy one.

EFFICIENCY VERIFIED FEMALES...

We do not just evaluate our sires. We also assess our replacement females. For the past 6 years we have been infusing females into our program that have undergone Growsafe testing for RFI and FCR. This is necessary to improve the efficiency of the animals we produce from the DAM side of the equation as well. Within the next couple of years, we will be producing more of these EFFICIENCY VERIFIED females than we can use in our own herd. If you are interested in adding Simm/Angus heifers into your herd, contact us directly.



ULTRASOUND...

We have engaged Windy Ridge Ultrasound for the past 6 years. Ultra sounding helps us supply greater accuracy to the RFI testing, obtaining a snapshot of what our progeny is carrying under the hide, as well as an indication of how the genetics of the animal is converting energy to protein and fat. Knowing where we stand helps us ensure we are producing a product that the end user (processors and consumers) is interested in purchasing. Due to the age of the animals, and the fact that they are not on a finishing diet, we are not necessarily critical that they are all currently grading AAA or higher, or that they have a certain lean meat yield, backfat or Rib Eye Area. We use it as a representation of comparison within the group to help identify progeny that may be superior for each trait.

MEASURING AND PRESENTATION OF OUR DATA...

Your time is valuable and never in abundance. Our **GOALS** are quite simple!!

1. To supply all information
2. Present it in a format that saves you time
3. Full transparency of any further information.

You know the traits that your interested in for your personal breeding goals. Focus on them and use the other tools how you see fit. If you want a **truly interactive experience to save you time**, instead of scouring this catalogue, first start with our Bull Ranking pages on our website at www.Highway21group.com to narrow your search. Here you will also find all the sire, dam and Herdtrax links to dive deeper into anything not presented in the catalogue. The sky really is the limit.

For perspective, here is a summary of industry values throughout the supply chain. The iconic model would be to run feed efficient cows, which produce the highest weaning weights, gain the fastest with the least amount of feed in the feed yard, and slaughter with the largest carcass weight possible (below heavy discounts), that grade prime yield grade 1. We are not suggesting these animals are easy to achieve, but we are offering data that help point you in the right direction on the road to success regardless of if you sell, retain ownership, feed, grass, sell beef cuts or produce females.

A Snapshot of Industry Values Today (Feb 2022)

1 Lb of Weaning weight		\$2.35
Steer Cost of Gain per Lb		\$1.55
1% of Carcass Yield		\$43
12.5% improvement FCR per head (feedlot)		\$153
17.5% improvement cow feed savings per year		\$168
	% Of All Grades	
	(Source: Canfax)	
Prime Premium per carcass	\$457	4.1%
Choice/AAA premium per carcass	Base	67.4%
Y1 Premium per carcass	\$61	12.4%
Y2 Premium per carcass	\$23	44.4%
AA/Select Discount per carcass	-\$75	26.9%
Y4 Discount per carcass	-\$75	8.8%
Y5 Discount per carcass	-\$112	2.2%

With **feed costs making up 65-75% of production costs across all sectors**, it goes without saying that it has the greatest effect on profitability outside of market prices. Furthermore, it takes 4 MCals of energy to produce protein and 9 MCals to produce fat thus we also must keep in perspective that although quality grade is important, we cannot forget to manage our Y4 and Y5 yield grades at the same time. These factors have always been important, but even more so with higher feed grains, which are likely here to stay. This made our decision to invest in infrastructure to evaluate feed efficiency and Ultrasound an easy one. The chart below shows what savings are possible when testing for RFI. A 12.5% improvement in FCR (feed conversion ratio) is strongly supported by the scientific community and upwards of 25% by some of our colleagues who have been selecting for multiple years. Now, for a feed yard that feeds 30,000 head a year, a feed savings of \$153 per head relates to \$4.6 million a year. Not to mention that the **yearly feed cost savings** on RFI selected cows can save you the **equivalent that 75 lbs of weaning weight** would generate. These are the reasons why we are so passionate about helping to make change in the industry for the better. The reality is, selling bulls and improving genetics is the fun part of our business, but at the same time, the benefits to ourselves and the rest of the industry are far greater than what a bull sale will generate.

Feed Savings at Various Barley Prices when selecting for RFI/DMC Based on a 650 lb steer finished to 1450 lbs			
% Improvement	Barley Cost \$413/MT (\$9/bu)	Barley Cost \$253/MT (\$5.50/bu)	
12.50%	\$153.00	\$99.00	
25%	\$306.00	\$198.00	
Per Sire (76 calves)	Barley Cost \$413/MT (\$9/bu)	Barley Cost \$253/MT (\$5.50/bu)	
12.50%	\$11,628.00	\$7,524.00	
25%	\$23,256.00	\$15,048.00	
Feed Cost Savings per Cow with RFI Selection			
Average Daily Feed Costs	% Improvement	Per Year	Per Life of Cow
\$2.63	17.50%	\$167.99	\$1,343.93
\$3.00	17.50%	\$191.63	\$1,533.00



100K GENOMICALLY ENHANCED EPD...



When you see this symbol with a bull, the accuracy of his EPD's have been genomically enhanced. By testing, it is the equivalent of the sire having about 25 progeny when assessing the top four traits (CE, BW, WW, YW). This improved accuracy helps provide confidence when selecting young animals with no actual offspring that otherwise would only have an EPD accuracy based on their sire, dam, and their own performance data.

Association Expected Progeny Differences (EPD's)

- **CE** – The CE EPD expresses differences in calving difficulty between calves born to first calf heifers. When comparing two sires, the larger value indicates fewer potential calving difficulties.
- **BW** – Expressed in pounds. Smaller EPD means lighter BW.
- **WW** – Expressed in pounds. Larger WW EPD's indicate progeny will have higher 205 weaning weights.
- **YW** – Expressed in pounds. Larger YW EPD's indicate progeny will have higher 365 yearling weights.
- **MILK** – Represented in pounds weaned relative to daughters expected milk and mothering ability.
- **MTL** – Combines ½ of the WW EPD and all the Milk EPD and is expressed as pounds of calf weaned at 205 days. Higher numbers predict greater weaning weights from female progeny.
- **CW** – Expressed in lbs. Higher numbers will have a greater carcass weight at slaughter.
- **REA** – Expected difference of REA in square inches. Higher numbers predict larger REA.
- **FAT** – Expected difference of fat measurement. Lower numbers predict less unwanted fat.
- **MARB** – Expected difference of marbling score. Higher numbers predict higher marbling score.
- **% Rank** – We have saved you the time of looking up how each animal ranks for each trait within the breed. Numbers less than 50 are in the top half of the breed for the trait, greater than 50 are in the bottom half.

OUR HARD DATA

Complimenting the customary EPD values in an effort to improve the accuracy for your breeding decisions.

- **BW** – Actual BW, expressed in lbs
- **AOD** – Age of Dam in years at time of calving.
- **Dam Index** – Herdtrax All Purpose Index (HAPI) The HAPI index or "Happy" index is meant to compare cows (in herd) based on their ability to be strong maternally and terminally. For full cow indexing guides, see our Bull Ranking Guide @ www.highway21group.com
- **Docility Scoring** - The safety of our customers, staff and family is Number 1. Without all of them, none of our success would be possible. Handling livestock should not have to be dangerous. We handle these animals daily in a low stress environment and do our best to prepare them for all types of environments. Each animal does have its own personality and reacts differently to handling. We have adopted what many other breeders already do, and what we feel should be a standard in the industry, by applying a docility score to our animals. We understand this may deter you from an animal you would have otherwise purchased, but your safety of knowing what you are buying is of utmost importance.

Our ranking system is as such:

1. These animals are not easily or safely handled. We have eliminated them from the herd.
2. These animals can be harder to handle, especially if alone or under pressure. They require a wider flight zone and can move quickly to maintain this flight zone.
3. These animals are very easy to handle and have a smaller flight zone. They will usually move off pressure slowly but with ease. Most of the animals will fit into this score.
4. These animals are extremely quiet and will take a lot of pressure to move. They do not get excited easily alone or in a group.

CALVING EASE (CE) SCORING

We have made every effort to have a very CONSERVATIVE approach to Calving Ease ranking on our Composite Bulls. We want you to sleep well at night knowing we are doing our part to make sure you will not have problems. Aside from naturally culling for calving ease issues over the past 10 years in our herd, we have outlined our criteria for how we have scored these bulls for CE. For the Purebred Charolais, we have posted the breed assoc EPD's for reference.

3 Use on Large frame first calf heifers with confidence.

2 Use on 2nd calvers or medium framed cows with confidence

1 Use on Mature cows (3rd calvers and up)

CRITERIA

CE Score 3

92 BW and lower on:

1. Bull for sale, reference sire, average of all reference sire progeny, average of all reference dam progeny
2. Assessed the low to high of BW of all progeny for deviation from the average
3. Reviewed the frequency of assisted at birth of all progeny of Reference sire to be less than 1%
4. Assessed the animal phenotypically for a smooth shoulder, narrow head for calving ease

CE Score 2

Same criteria except using a 102 lb BW and lower and frequency of assisted births to be less than 5%.

CE Score 1

Same criteria except using a 110 lb BW and lower and frequency of assisted births to be less than 5%

NOTE:

Information regarding Highway 21 herd health, nutrition program, Herdtrax Beef, and Vytelle/Growsafe testing can be found at the back of the catalogue



- **ADJ 205** – Weaning weight expressed in lbs adjusted to 205 days to compare all bulls at equal age.
- **Wean Ratio** - Represents the percentage that the adjusted 205 weight is of the group.
- **Wean ADG** – Gain per day from Birth to actual weaning weight
- **ADJ 365** - Yearling weight expressed in lbs adjusted to 365 days to compare all bulls at equal age.
- **YRLG Ratio** - Represents the percentage that the adjusted 365 weight is of the group.
- **Post Wean ADG** – Actual gain per day from weaning to yearling.
- **WPDA** - Actual gain per day of age based on actual yearling weight. The Charolais match that of the association and BW is included as weight gain. Herdtrax is used for the Composites and subtracts BW from the yearling weight in calculating the weight gain.
- **RFI (Residual Feed Intake)** - RFI is calculated as the difference between an animal's actual feed intake and their expected feed intake. For more in depth information, see the GROWSAFE RFI QUICK FACTS. Lower/Negative numbers are superior.
- **FCR (Feed Conversion Ratio)** –Represented in pounds of dry feed consumed to gain one pound of live weight. Lower numbers are superior.
- **MARB** - Marbling is the percent of Intermuscular fat within the muscle. AAA, AA, A. The ranking uses actual score instead of Canadian Beef Grading class.
- **BF** - Backfat is the thickness of fat covering the loin muscle in inches. This is the main trait that affects percent Lean Meat Yield or Y1-Y5 yield grades at processing. The greater the measurement, the poorer or higher (Y5) the yield grade.

- **REA (Rib Eye Area)** - The size of the loin muscle in square inches. An increase in REA will raise the percent Lean Meat Yield.
- **REA in $\text{in}^2/100\#$** – Represents square inches of Rib Eye per 100 lbs live weight
- **% LMY** – Percent Lean Meat Yield represents what percent of the carcass is lean muscle versus bone, fat, etc.
- **Mus. Index** – Represents square inches of Rib Eye per 100 lbs estimated carcass weight.

SHADING/\$ INDEX GUIDE...

ELITE	PLATINUM	GOLD	SILVER
-------	----------	------	--------

Throughout our catalogue, you will see a color scoring guide for:

1. WEAN\$ (ADG),
2. ADG\$ (post wean ADG performance),
3. CONV.\$ (feed efficiency – RFI and FCR),
4. MARB\$ (quality grade) and
5. MUS\$ (muscling score, % LMY)

This serves as two purposes. First off, it is a quick visual representation of the corresponding data and where the animal ranks within the bell curve of each group. Second, if you are only concerned about pounds weaned, traits 1 and 2 would be your focus. For traits 2, 3, 4 and 5, it represents the premium value we can offer on calf buy back, or value you may experience if you retain ownership. GOLD and SILVER categories represent cattle that we would consider average. PLATINUM represents cattle that we would pay premiums ABOVE average calf price to acquire. ELITE is the best of the best and would obtain the GREATEST premiums.



As feed costs jump, you can't be caught feeding ingredients that hammer profits.

Let Cargill's team of trusted professionals partner with you to build a nutritional program that integrates our feeds, minerals and services to provide a solution that fits your specific environment.



YEARLING CHAROLAIS BULLS



1

HWY *Estrada* 4J

4th Gen Poll 1/8/2021 HWY 4J MC821309

PLEASANT DAWN CHISUM 216A
JSR ESTRADA 52E
JSR JASMINE 167C

TMJF BRAYSHAW 339B
PLEASANT DAWN TINA 72D
PLEASANT DAWN FAY 176B

BW: 105 lbs. AOD: 5 Dam Index: 102.8 Doc: 2

	CE	BW	WW	YW	MILK	MTL	CW	REA	FAT	MARB
	6	-0.1	57	114	18	47	25	0.51	1.314	1.09
%RK	50	40	10	4	80	25	15	30	90	4
PERF METRICS	ADJ 205	WEAN RATIO	WEAN ADG	WEAN\$	ADJ 365	YRLG RATIO	POST WEAN ADG	WPDA	ADG\$	
	714	100	2.92	GOLD	1370	113	4.1	3.59	ELITE	
ULTRASOUND	MARB	MARB\$	BF	REA	%LMY	REA IN^2/100	MUS\$			
	AA	PLAT	4.76	14.4	65.58	1.16	GOLD			

One of the best Herd Sire prospects in the pen. Hwy 4J's sire posts one the highest WW and YW EPD's we have ever seen. This calf's tremendous post wean gain, along with what Charmaine Ranching has produced from this sire proves him to be a rockstar. When you have Pleasant Dawn Chisum and LT Ledger in the background, we should not be surprised.

2

HWY *Ledger Up* 8J

4th Gen Poll 1/8/2021 HWY 8J MC818276

LT LEDGER 0332 P
MAIN LEDGER UP 4C
SKW JEWEL 29A

ZWB PLEASANTDAWNLEDGER34B
MAIN PD LEDGER 916G
MAIN HOMBRE 457B

BW: 78 lbs. AOD: 2 Dam Index: 103.2 Doc: 3

EPDS	CE	BW	WW	YW	MILK	MTL	CW	REA	FAT	MARB
	15.5	-5.6	43	82	18	39	7	0.29	1.264	1
%RK	1	1	60	65	85	85	95	90	90	10
PERF METRICS	ADJ 205	WEAN RATIO	WEAN ADG	WEAN\$	ADJ 365	YRLG RATIO	POST WEAN ADG	WPDA	ADG\$	
	648	91	2.93	GOLD	1354	112	4.41	3.3	ELITE	
ULTRASOUND	MARB	MARB\$	BF	REA	%LMY	REA IN^2/100	MUS\$			
	AA	PLAT	5.24	12.69	63.7	1.11	SILVER			



NOTE: The yearling Charolais bulls are currently on test. Feed efficiency information will be available sale day





3

HWY *Granada* 10J

Homo Polled 1/10/2021 HWY 10J MC818683

LT LANZA 1427 PLD
MAIN GRANADA 191E
MAIN UNIVERSAL 1022X

NCC TRUE 97B
MAIN TRUES WILLA 839F
TMJF WILLA 252W

BW: 95 lbs. AOD: 3 Dam Index: 102.7 Doc: 2

	CE	BW	WW	YW	MILK	MTL	CW	REA	FAT	MARB
	10.1	-3.5	42	90	30	51	16	0.42	1.111	0.26
%RK	15	5	70	40	2	10	60	55	80	50
PERF METRICS	ADJ 205	WEAN RATIO	WEAN ADG	WEAN\$	ADJ 365	YRLG RATIO	POST WEAN ADG	WPDA	ADG\$	
	735	103	2.81	GOLD	1229	102	3.09	3.18	GOLD	

ULTRASOUND	MARB	MARB\$	BF	REA	%LMY	REA IN^2/100	MUS\$
	A	GOLD	3.81	14.26	66.44	1.29	PLAT

4

HWY *Granada* 11J

Homo Polled 1/12/2021 HWY 11J MC818684

LT LANZA 1427 PLD
MAIN GRANADA 191E
MAIN UNIVERSAL 1022X

MAIN LEDGER UP 4C
MAIN LEDGER UP 802F
FVSF MS MANHATTAN 69D

BW: 115 lbs. AOD: 3 Dam Index: 103 Doc: 3

	CE	BW	WW	YW	MILK	MTL	CW	REA	FAT	MARB
	4.2	1.2	55	111	24	52	26	0.54	1.086	0.59
%RK	70	60	10	5	25	10	10	20	80	25
PERF METRICS	ADJ 205	WEAN RATIO	WEAN ADG	WEAN\$	ADJ 365	YRLG RATIO	POST WEAN ADG	WPDA	ADG\$	
	725	102	2.84	GOLD	1224	101	3.12	3.26	PLAT	

ULTRASOUND	MARB	MARB\$	BF	REA	%LMY	REA IN^2/100	MUS\$
	A	SILVER	2.86	15.6	68.51	1.38	ELITE





5

HWY *Daycheck* 15J

2nd Gen Poll 1/17/2021 HWY 15J MC818669

LT LEDGER 0332 P
MAIN PAYCHECK 118F
MAIN COBB'S SHADOW 439B

G.BROS HOMBRE 908X
MAIN HOMBRE 457B
HOPEWELL CUTIE 822U

BW: 110 lbs. AOD: 7 Dam Index: 104 Doc: 3

EPDS	CE	BW	WW	YW	MILK	MTL	CW	REA	FAT	MARB
	7.1	0.8	44	87	21	43	18	0.48	0.73	0.85
%RK	40	55	55	50	50	55	45	35	55	10
PERF METRICS	ADJ 205	WEAN RATIO	WEAN ADG	WEAN\$	ADJ 365	YRLG RATIO	POST WEAN ADG	WPDA	ADG\$	
	676	95	2.76	SILVER	1151	95	2.97	3.16	GOLD	

ULTRASOUND	MARB	MARB\$	BF	REA	%LMY	REA IN^2/100	MUS\$
	AA	ELITE	6.19	13.08	63.05	1.23	SILVER

6

HWY *Affinity* 20J

2nd Gen Poll 1/18/2021 HWY 20J MC818269

LT RUSHMORE 8060 PLD
LT AFFINITY 6221 PLD
LT ATHENA 1247

CEDARLEA SHOELESS JOE 83C
TURNBULL'S ELENA 58G
TURNBULLS DANCE 706D

BW: 92 lbs. AOD: 2 Dam Index: 102.5 Doc: 3

EPDS	CE	BW	WW	YW	MILK	MTL	CW	REA	FAT	MARB
	14.5	-3.6	50	97	25	49	14	0.4	1.467	0.87
%RK	2	5	25	25	20	15	70	65	95	10
PERF METRICS	ADJ 205	WEAN RATIO	WEAN ADG	WEAN\$	ADJ 365	YRLG RATIO	POST WEAN ADG	WPDA	ADG\$	
	726	102	2.78	SILVER	1251	103	3.28	3.21	PLAT	

ULTRASOUND	MARB	MARB\$	BF	REA	%LMY	REA IN^2/100	MUS\$
	AA	PLAT	4.29	13.63	65.45	1.25	GOLD





7

HWY *Free Choice* 22J

3rd Gen Poll 1/19/2021 HWY 22J MC818710

SOS CHIVE ON 122C
BRWW FREE CHOICE 3F
SHELCO LADY'S CHOICE721T

SILVERSTREAM GEDDES G102
MXS MEG 516C
MXS MEGARA 58X

BW: 105 lbs. AOD: 6 Dam Index: 104 Doc: 3

EPDS	CE	BW	WW	YW	MILK	MTL	CW	REA	FAT	MARB
	1.6	2	53	94	22	48	23	0.54	0.603	0.21
%RK	90	15	15	30	50	20	20	20	45	55
PERF METRICS	ADJ	WEAN RATIO	WEAN ADG	WEAN\$	ADJ	YRLG RATIO	POST WEAN ADG		WPDA	ADG\$
	205				365					
	794	112	3.36	ELITE	1104	91	1.94		3.2	SILVER
ULTRASOUND	MARB	MARB\$	BF	REA	%LMY	REA IN^2/100	MUS\$			
	A	SILVER	3.86	13.17	65.51	1.19	GOLD			

8

HWY *Granada* 23J

Homo Polled 1/19/2021 HWY 23J MC818704

LT LANZA 1427 PLD
MAIN GRANADA 191E
MAIN UNIVERSAL 1022X

LT LEDGER 0332 P
MAIN ASH'S LEDGER 838F
PLEASANT DAWN ASH84D

BW: 100 lbs. AOD: 3 Dam Index: 105 Doc: 2

EPDS	CE	BW	WW	YW	MILK	MTL	CW	REA	FAT	MARB
	12.3	-2.3	52	107	23	49	23	0.56	1.518	0.94
%RK	10	15	20	10	35	15	20	20	95	10
PERF METRICS	ADJ	WEAN RATIO	WEAN ADG	WEAN\$	ADJ	YRLG RATIO	POST WEAN ADG		WPDA	ADG\$
	205				365					
	830	117	3.25	PLAT	1424	118	3.71		3.69	ELITE
ULTRASOUND	MARB	MARB\$	BF	REA	%LMY	REA IN^2/100	MUS\$			
	AA	GOLD	4.29	14.55	66.19	1.17	PLAT			

His mother is our 2nd highest indexing Charolais Indexing dam represented. This son scored the 2nd highest WW index in pen, and the highest YW index.



9

HWY *Maximus* 24J

4th Gen Poll 1/18/2021 HWY 24J MC818688

SKW EXPEDITION 89C CEDARLEA TY COBB 78C
WRANGLER MAXIMUS 74E WRANGLER MS CAPRICE 164G
WRANGLER MS ROSE 14A WRANGLER MS TANYA 130E

BW: 102 lbs. AOD: 2 Dam Index: 101.7 Doc: 3

EPDS	CE	BW	WW	YW	MILK	MTL	CW	REA	FAT	MARB
	7	-0.6	50	100	21	46	20	0.54	1.111	0.05
%RK	40	30	25	20	55	35	35	20	80	65
PERF METRICS	ADJ 205	WEAN RATIO	WEAN ADG	WEANS	ADJ 365	YRLG RATIO	POST WEAN ADG	WPDA	ADG\$	
	681	96	2.51	SILVER	1184	98	3.15	3.02	GOLD	
ULTRASOUND	MARB	MARB\$	BF	REA	%LMY	REA IN^2/100	MUS\$			
	AA	PLAT	2.92	14.25	67.34	1.35	ELITE			



10

HWY *Ledger Up* 26J

2nd Gen Poll 1/21/2021 HWY 26J MC818670

MAIN LEDGER UP 4C RHH WHITEHOT MOROCCO 73X
MAIN LEDGER UP 105E FVSF MS HOT MOROCCO 30D
MAIN LANZA 5014C RPJ VENUS 1104Y

BW: 110 lbs. AOD: 5 Dam Index: 102 Doc: 3

EPDS	CE	BW	WW	YW	MILK	MTL	CW	REA	FAT	MARB
	3.5	2.2	47	92	21	45	22	0.49	0.502	0.1
%RK	75	80	40	35	50	40	25	35	40	65
PERF METRICS	ADJ 205	WEAN RATIO	WEAN ADG	WEANS	ADJ 365	YRLG RATIO	POST WEAN ADG	WPDA	ADG\$	
	688	97	2.77	SILVER	1142	94	2.84	3.12	GOLD	
ULTRASOUND	MARB	MARB\$	BF	REA	%LMY	REA IN^2/100	MUS\$			
	AA	ELITE	3.33	11.81	64.94	1.08	GOLD			



11

HWY *Tree Choice* 28J

4th Gen Poll 1/21/2021 HWY 28J MC818672

SOS CHIVE ON 122C BLC ICEMAN 24Z
BRWW FREE CHOICE 3F FVSF MS ICE 101C
SHELCO LADY'S CHOICE 721T FVSF MS MERIT 41W

BW: 112 lbs. AOD: 6 Dam Index: 101.1 Doc: 3

EPDS	CE	BW	WW	YW	MILK	MTL	CW	REA	FAT	MARB
	3	2.6	42	80	24	45	20	0.38	0.4	0.12
%RK	80	85	65	70	25	35	35	70	30	60
PERF METRICS	ADJ 205	WEAN RATIO	WEAN ADG	WEANS	ADJ 365	YRLG RATIO	POST WEAN ADG	WPDA	ADG\$	
	629	88	2.52	SILVER	1094	90	2.91	2.98	GOLD	
ULTRASOUND	MARB	MARB\$	BF	REA	%LMY	REA IN^2/100	MUS\$			
	AA	PLAT	3.33	12.33	65.36	1.17	GOLD			





12

HWY *Goodyear* 30J

3rd Gen Poll 1/21/2021 HWY 30J MC818204

SVY FORTRESS 703E
MVY GOODYEAR 19G
MVY MISTY 65A

CSS SIR NAVIGATOR 20Y
SOS NETTIE 110E
ANCHOR SOS ANNETTE 15A

BW: 109 lbs. AOD: 4 Dam Index: 102 Doc: 3

EPDS	CE	BW	WW	YW	MILK	MTL	CW	REA	FAT	MARB
	5.5	2.7	38	75	20	39	15	0.42	0.273	0.41
%RK	55	85	85	80	65	90	65	55	25	35
PERF METRICS	ADJ 205	WEAN RATIO	WEAN ADG	WEANS	ADJ 365	YRLG RATIO	POST WEAN ADG	WPDA	ADGS	
	695	98	2.72	SILVER	1133	94	2.74	3.05	GOLD	

ULTRASOUND	MARB	MARB\$	BF	REA	%LMY	REA IN^2/100	MUS\$
	A	GOLD	2.38	11.64	65.78	1.09	GOLD

EPDS	CE	BW	WW	YW	MILK	MTL	CW	REA	FAT	MARB
	12.5	-4.4	63	118	24	55	22	0.53	2.178	0.52
%RK	10	3	2	2	25	2	25	25	100	30
PERF METRICS	ADJ 205	WEAN RATIO	WEAN ADG	WEANS	ADJ 365	YRLG RATIO	POST WEAN ADG	WPDA	ADGS	
	885	124	3.6	ELITE	1335	110	2.81	3.59	PLAT	

ULTRASOUND	MARB	MARB\$	BF	REA	%LMY	REA IN^2/100	MUS\$
	AA	GOLD	4.8	13.73	65	1.17	GOLD

13

HWY *Everglade* 33J

Homo Polled 1/24/2021 HWY 33J MC818216

TURNBULLS DUTY-FREE 358D
RGP EVERGLADE 31G
RGP ROXANNE 31Y

CEDARLEA SHOELESS JOE 83C
TURNBULL'S MISS SHAWNA 984F
CTP MISS ROBIN 666C

BW: 83 lbs. AOD: 3 Dam Index: 106.9 Doc: 3

Here is another Herd Sire prospect. This 2nd calf of Turnbull's Miss Shawna 984F was the highest WW index bull in the pen and 4th highest YW index. His maternal brother 984H is lot 33 in our 2 year old pen. This smooth, long bodied combination of Cedarlea Shoeless Joe and RGP Everglade, a son of Turnbull's Duty Free, is outstanding in all categories. He boasts a low BW with explosive performance. We would not be afraid to use this one on first calf heifers. Check out his mother. She ranks in the top 15% for nearly everything measured in CCA and is cranking up her index in Herdtrax after just 2 calves measured, with the third just born, giving her a BW average on progeny of 88 lbs.





14

HWY *Everglade* 34J

Homo Polled 1/24/2021 HWY 34J MC818217

TURNBULLS DUTY-FREE 358D

CEDARDALE ZEAL 125Z

RGF EVERGLADE 31G

SOS FLIRT 76F

RGF ROXANNE 31Y

SOS RIZZO 76D

BW: 101 lbs. AOD: 3 Dam Index: 105.4 Doc: 3

	CE	BW	WW	YW	MILK	MTL	CW	REA	FAT	MARB
	6.6	-0.6	60	112	18	48	23	0.46	1.441	0.65
%RK	45	30	4	5	85	20	20	45	95	20
PERF METRICS	ADJ 205	WEAN RATIO	WEAN ADG	WEANS	ADJ 365	YRLG RATIO	POST WEAN ADG	WPDA	ADGS	
	781	110	3.18	PLAT	1280	106	3.12	3.47	PLAT	

ULTRASOUND	MARB	MARBS	BF	REA	%LMY	REA IN^2/100	MUSS
	AA	GOLD	3.33	12.77	65.72	1.11	GOLD

15

HWY *Tree Choice* 36J

4th Gen Poll 1/25/2021 HWY 36J MC818678

SOS CHIVE ON 122C

CIRCLE CEE LUCIFER 608D

BRWW FREE CHOICE 3F

WINSNES ALICE BLUE 54F

SHELCO LADY'S CHOICE721T

BRWW JASMINE 33D

BW: 89 lbs. AOD: 3 Dam Index: 101.9 Doc: 3

	CE	BW	WW	YW	MILK	MTL	CW	REA	FAT	MARB
	8.4	-1	39	70	23	42	12	0.27	0.73	0.38
%RK	30	25	80	90	35	60	80	95	55	40
PERF METRICS	ADJ 205	WEAN RATIO	WEAN ADG	WEANS	ADJ 365	YRLG RATIO	POST WEAN ADG	WPDA	ADGS	
	719	101	2.76	SILVER	1092	90	2.33	2.89	SILVER	

ULTRASOUND	MARB	MARBS	BF	REA	%LMY	REA IN^2/100	MUSS
	AA	PLAT	1.9	11.88	66.45	1.21	PLAT





HWY *Gibson* 41J

4th Gen Poll 1/31/2021 HWY 41J MC818681

LT LANZA 1427 PLD
MAIN GIBSON 56G
MAIN COBB'S SHADOW 439B

MAIN LEDGER UP 4C
MAIN LEDGER UP'S COBB 807F
MAIN COBB 665D

BW: 89 lbs. AOD: 3 Dam Index: 102.9 Doc: 3

EPDS	CE	BW	WW	YW	MILK	MTL	CW	REA	FAT	MARB
	10.2	-3.8	50	99	26	51	16	0.47	1.238	0.53
%RK	15	4	30	20	15	10	60	40	90	25
PERF METRICS	ADJ	WEAN RATIO	WEAN ADG	WEAN\$	ADJ	YRLG RATIO	POST WEAN ADG	WPDA	ADG\$	
	205	107	3.13	PLAT	365	106	3.28	3.45	PLAT	
ULTRASOUND	MARB	MARB\$	BF	REA	%LMY	REA IN^2/100	MUS\$			
	AA	ELITE	4.76	14.6	65.75	1.22	GOLD			

This son of Main Gibson sits near the top of performance of all his pen mates.

CREATING MORE VALUE TOGETHER.

Optimize your cattle performance with a **Balanced Feeding Program**
You can trust all Year-Round.

We offer Customized Ration Balancing and carry a complete line of Beef Feeds including:

- Feedlot Supplements and Premixes
- Complete Feeds - Cows / Bulls / Calf Creep
- HI-RANGE Mineral Program

DUKE JOY, Nutritional Consultant - BEEF
Cell: 403.633.0070 | Email: duke.joy@trouwnutrition.com

Proudly fed by Trouw Nutrition
www.trouwnutrition.ca





17

HWY *Aquarius* 42J

3rd Gen Poll 2/1/2021 HWY 42J MC818748

WINN MANS SKAGGS 663X

CEDARLEA TY COBB 78C

SPARROWS AQUARIUS 493B

WRANGLER MS ALY 213F

SPARROWS ANGEL EYES 458X

SDC ALY 113U

BW: 114 lbs. AOD: 3 Dam Index: 103.5 Doc: 2

	CE	BW	WW	YW	MILK	MTL	CW	REA	FAT	MARB
	6.3	1.9	54	110	26	53	27	0.59	1.111	0.06
%RK	50	75	15	10	15	4	10	15	80	65
PERF METRICS	ADJ 205	WEAN RATIO	WEAN ADG	WEAN\$	ADJ 365	YRLG RATIO	POST WEAN ADG	WPDA	ADG\$	
	828	116	3.17	PLAT	1327	110	3.12	3.5	PLAT	
ULTRASOUND	MARB	MARB\$	BF	REA	%LMY	REA IN*2/100	MUS\$			
	A	GOLD	4.76	14.84	65.94	1.28	PLAT			

We acquired this Sparrows Aquarius son by purchasing his mother from Wrangler Charolais. He is one of the best tan bulls in the pen and as well as claimed the 3rd highest WW index in the pen and his YW index can't be forgotten either.

"H21 provided exceptional service and guidance when selecting for a CE/ performance package in a breed I was not familiar with"

Kyle Lemmer

Rockyview County





18

HWY *Apex* 48J

4th Gen Poll 2/6/2021 HWY 48J MC818680

LT LEDGER 0332 P
SOS APEX PLD 139F
TMJF BERYLE 447B

SPARROWS ARTISAN 604D
WRANGLER MS BELLA 206F
WRANGLER MS BELLA 96D

BW: 102 lbs. AOD: 3 Dam Index: 101.5 Doc: 3

EPDS	CE	BW	WW	YW	MILK	MTL	CW	REA	FAT	MARB
	7.5	-1.1	52	98	17	42	16	0.48	0.857	0.94
%RK	35	25	20	25	90	60	60	35	65	10
PERF METRICS	ADJ 205	WEAN RATIO	WEAN ADG	WEAN\$	ADJ 365	YRLG RATIO	POST WEAN ADG	WPDA	ADG\$	
	724	102	2.72	SILVER	1285	106	3.51	3.31	PLAT	

ULTRASOUND	MARB	MARB\$	BF	REA	%LMY	REA IN*2/100	MUS\$
	A	GOLD	3.86	12.64	65.08	1.17	GOLD

19

HWY *Granada* 52J

4th Gen Poll 2/5/2021 HWY 52J MC818682

LT LANZA 1427 PLD
MAIN GRANADA 191E
MAIN UNIVERSAL 1022X

PLEASANTDAWN CLEVER 214C
MAIN BUD HOMBRE 831F
MAIN HOMBRE 457B

BW: 95 lbs. AOD: 3 Dam Index: 102.1 Doc: 3

EPDS	CE	BW	WW	YW	MILK	MTL	CW	REA	FAT	MARB
	11.5	-2.1	49	99	21	45	18	0.46	1.162	0.73
%RK	10	15	30	20	60	40	45	45	85	15
PERF METRICS	ADJ 205	WEAN RATIO	WEAN ADG	WEAN\$	ADJ 365	YRLG RATIO	POST WEAN ADG	WPDA	ADG\$	
	720	101	2.91	GOLD	1206	100	3.04	3.25	GOLD	

ULTRASOUND	MARB	MARB\$	BF	REA	%LMY	REA IN*2/100	MUS\$
	AA	ELITE	3.33	12.59	65.58	1.19	GOLD





20

HWY *Ledger Up* 53J

4th Gen Poll 2021-02-09 HWY 53J MC818673

MAIN LEDGER UP 4C

MAIN LEDGER UP 105E

MAIN LANZA 5014C

LT LANZA 1427 PLD

MAIN LANZA 620D

MAIN IGNITION 8878 222Z

BW: 115 lbs. AOD: 5 Dam Index: 101.3 Doc: 2

EPDS	CE	BW	WW	YW	MILK	MTL	CW	REA	FAT	MARB
	6.1	0.2	48	101	24	48	23	0.45	0.73	0.64
%RK	50	40	35	15	25	20	20	45	55	20
PERF METRICS	ADJ 205	WEAN RATIO	WEAN ADG	WEANS	ADJ 365	YRLG RATIO	POST WEAN ADG	WPDA	ADGS	
	691	97	2.81	GOLD	1195	99	3.15	3.29	PLAT	

ULTRASOUND	MARB	MARB\$	BF	REA	%LMY	REA IN^2/100	MUS\$
	AA	ELITE	4.8	12.55	64.04	1.14	SILVER

21

HWY *Outsider* 55J

Scurred 2021-02-12 HWY 55J MC821204

LT LONG DISTANCE 9001 PLD

M&M OUTSIDER 4003 PLD

M&M MS CARBINE 1567 PLD

TR MR FIRE WATER 5792RET

MISS PRAIRIE COVE 519C

STAUFFERS MADISON 85M

BW: 90 lbs. AOD: 6 Dam Index: 104.3 Doc: 3

EPDS	CE	BW	WW	YW	MILK	MTL	CW	REA	FAT	MARB
	10.2	-3.3	33	61	26	43	10	0.41	1.34	-0.23
%RK	15	10	95	100	10	55	90	60	90	85
PERF METRICS	ADJ 205	WEAN RATIO	WEAN ADG	WEANS	ADJ 365	YRLG RATIO	POST WEAN ADG	WPDA	ADGS	
	736	102	3.15	PLAT	1155		2.62	3.34	GOLD	

ULTRASOUND	MARB	MARB\$	BF	REA	%LMY	REA IN^2/100	MUS\$
	AA	ELITE	4.33	13.93	65.64	1.26	GOLD





22

HWY *General Lee* 60J

Horned 2/18/2021 HWY 60J MC818729

EATONS GENERAL LEE 20015P
PH GENERAL LEE 96F
PH TATUM 79A

MAIN LEDGER'S SHADOW 26D
MAIN PEACHES 951G
TTSS MISS PEACHES 67D

BW: 89 lbs. AOD: 2 Dam Index: 101.6 Doc: 3

EPDS	CE	BW	WW	YW	MILK	MTL	CW	REA	FAT	MARB
	8.5	-0.3	48	93	25	49	17	0.52	0.984	0.98
%RK	25	35	35	35	20	15	50	25	75	10
PERF METRICS	ADJ 205	WEAN RATIO	WEAN ADG	WEAN\$	ADJ 365	YRLG RATIO	POST WEAN ADG	WPDA	ADG\$	
	735	103	2.84	GOLD	1110	92	2.34	2.95	SILVER	

ULTRASOUND	MARB	MARB\$	BF	REA	%LMY	REA IN^2/100	MUS\$
	AA	ELITE	3.81	12.84	65.28	1.31	GOLD

23

HWY *General Lee* 61J

Horned 2021-02-20 HWY 61J MC818219

EATONS GENERAL LEE 20015P
PH GENERAL LEE 96F
PH TATUM 79A

PLEASANTDAWN FALCON953D
K-COW CASCADE 94F
GLM CASCADE 30C

BW: 92 lbs. AOD: 3 Dam Index: 101.2 Doc: 2

EPDS	CE	BW	WW	YW	MILK	MTL	CW	REA	FAT	MARB
	7.7	-0.8	47	91	25	48	16	0.43	0.933	0.73
%RK	35	25	40	40	20	20	60	55	70	15
PERF METRICS	ADJ 205	WEAN RATIO	WEAN ADG	WEAN\$	ADJ 365	YRLG RATIO	POST WEAN ADG	WPDA	ADG\$	
	734	103	2.82	GOLD	1072	89	2.11	2.86	SILVER	

ULTRASOUND	MARB	MARB\$	BF	REA	%LMY	REA IN^2/100	MUS\$
	AA	GOLD	2.86	13.22	66.57	1.38	PLAT



24

HWY *General Lee* 65J

Horned 2021-02-23 HWY 65J MC818281

EATONS GENERAL LEE 20015P

JSR ESTRADA 52E

PH GENERAL LEE 96F

MAIN HOT ESTRADA 962G

PH TATUM 79A

FVSF MS HOT MOROCCO 32D

BW: 108 lbs. AOD: 2 Dam Index: 102.8 Doc: 3

EPDS	CE	BW	WW	YW	MILK	MTL	CW	REA	FAT	MARB
	1.2	2.8	64	123	23	55	31	0.68	1.213	1.15
%RK	90	85	2	1	30	2	2	5	85	3
PERF METRICS	ADJ 205	WEAN RATIO	WEAN ADG	WEANS	ADJ 365	YRLG RATIO	POST WEAN ADG	WPDA	ADGS	
	816	115	3.14	PLAT	1176	97	2.25	3.17	SILVER	
ULTRASOUND	MARB	MARB\$	BF	REA	%LMY	REA IN^2/100	MUS\$			
	AA	PLAT	3.33	14.01	66.73	1.34	PLAT			



25

HWY *Everglade* 66J

4th Gen Poll 2021-02-23 HWY 66J MC818886

TURNBULLS DUTY-FREE 358D

POST ALASKA 836A

RGP EVERGLADE 31G

POST DESTINY 119D

RGX ROXANNE 31Y

GOLD-BAR PASSION 119S

BW: 98 lbs. AOD: 5 Dam Index: 103.6 Doc: 3

EPDS	CE	BW	WW	YW	MILK	MTL	CW	REA	FAT	MARB
	8.9	-1.1	47	94	19	42	19	0.29	1.289	0.44
%RK	25	25	40	30	75	60	40	90	90	35
PERF METRICS	ADJ 205	WEAN RATIO	WEAN ADG	WEANS	ADJ 365	YRLG RATIO	POST WEAN ADG	WPDA	ADGS	
	707	99	2.92	GOLD	1145	95	2.74	3.18	GOLD	
ULTRASOUND	MARB	MARB\$	BF	REA	%LMY	REA IN^2/100	MUS\$			
	AA	PLAT	4.29	13.78	65.57	1.33	GOLD			



26

HWY *Ledger's Shadow* 68J

3rd Gen Poll 2021-02-24 HWY 68J MC818752

LT LEDGER 0332 P

HEJ BIG BANG 81B

MAIN LEDGER'S SHADOW 26D

MAIN BIG BANG 663D

MAIN COBB'S SHADOW 439B

MAIN CHIEF KAT 8878 240Z

BW: 92 lbs. AOD: 5 Dam Index: 101.4 Doc: 3

EPDS	CE	BW	WW	YW	MILK	MTL	CW	REA	FAT	MARB
	10	-3.7	47	87	24	47	13	0.37	1.137	0.71
%RK	15	5	40	50	25	25	75	75	85	15
PERF METRICS	ADJ 205	WEAN RATIO	WEAN ADG	WEANS	ADJ 365	YRLG RATIO	POST WEAN ADG	WPDA	ADGS	
	733	103	3.08	PLAT	1207	100	2.96	3.34	GOLD	
ULTRASOUND	MARB	MARB\$	BF	REA	%LMY	REA IN^2/100	MUS\$			
	AA	ELITE	4.29	13.58	65.4	1.29	GOLD			





27

HWY *Home Grown* 69J

3rd Gen Poll 2/26/2021 HWY 69J MC818664

WINN MANS CHAVEZ 826Y ANCHOR WRANGLER 14W
SOS HOME GROWN 15C ANCHOR ANGELINA 19A
SOS SPRINGSIDE'S ADELE167 ANCHOR MAISIE COTTON 4M

BW: 102 lbs. AOD: 8 Dam Index: 101.1 Doc: 3

EPDS	CE	BW	WW	YW	MILK	MTL	CW	REA	FAT	MARB
	8.6	-1.9	47	86	12	35	12	0.33	0.425	0.37
%RK	25	15	40	50	100	100	80	85	35	40
PERF METRICS	ADJ 205	WEAN RATIO	WEAN ADG	WEANS	ADJ 365	YRLG RATIO	POST WEAN ADG	WPDA	ADGS	
	707	99	2.95	GOLD	1086	90	2.37	3.07	SILVER	
ULTRASOUND	MARB	MARBS	BF	REA	%LMY	REA IN^2/100	MUSS			
	AA	ELITE	4.76	11.28	63.05	1.19	SILVER			



28

NCC *Legend* 69J

Horned 2021-05-17 NCC 69J MC816259

LT LEDGER 0332 P G.BROS TONTO 238Y
CIRCLE CEE LEGEND 307A NCC RUBY 23A
CIRCLE CEE STUNNING 125Y NCC RUBY 48W

BW: 105 lbs. AOD: Dam Index: Doc: 3

EPDS	CE	BW	WW	YW	MILK	MTL	CW	REA	FAT	MARB
	6.9	-1	61	112	26	56	25	0.67	1.822	-0.18
%RK	40	25	3	5	15	1	15	5	100	85
PERF METRICS	ADJ 205	WEAN RATIO	WEAN ADG	WEANS	ADJ 365	YRLG RATIO	POST WEAN ADG	WPDA	ADGS	
	952	133	4.13	ELITE						
ULTRASOUND	MARB	MARBS	BF	REA	%LMY	REA IN^2/100	MUSS			
	A	SILVER	2.38	12.4	66.39	1.23	PLAT			



29

HWY *Ledger Up* 71J

4th Gen Poll 2021-02-26 HWY 71J MC818675

LT LEDGER 0332 P LT RUSHMORE 4024 PLD
MAIN LEDGER UP 4C MAIN RUSHMORE 702E
SKW JEWEL 29A MAIN LANZA 506C

BW: 114 lbs. AOD: 4 Dam Index: 101.9 Doc: 3

EPDS	CE	BW	WW	YW	MILK	MTL	CW	REA	FAT	MARB
	7.4	1.1	52	101	18	44	21	0.45	1.035	0.7
%RK	35	60	20	20	80	45	30	45	75	15
PERF METRICS	ADJ 205	WEAN RATIO	WEAN ADG	WEANS	ADJ 365	YRLG RATIO	POST WEAN ADG	WPDA	ADGS	
	745	105	3.03	GOLD	1256	104	3.19	3.47	PLAT	
ULTRASOUND	MARB	MARBS	BF	REA	%LMY	REA IN^2/100	MUSS			
	AA	PLAT	4.76	12.09	63.71	1.1	SILVER			

HIGHWAY 21 GROUP CHROLAIS
& SIMM/ANGUS BULL SALE





30

HWY *Ledger Up* 72J

Homo Polled 2/26/2021 HWY 72J MC818676

LT LEDGER 0332 P
MAIN LEDGER UP 4C
SKW JEWEL 29A

PLEASANTDAWN CLEVER 214C
MAIN BUD 715E
MAIN CHIEF KAT 8878 240Z

BW: 89 lbs. AOD: 4 Dam Index: 102 Doc: 3

EPD	CE	BW	WW	YW	MILK	MTL	CW	REA	FAT	MARB
	11.5	-4	53	96	19	45	13	0.35	1.314	0.84
%RK	10	4	20	30	75	40	75	80	90	10
PERF METRICS	ADJ 205	WEAN RATIO	WEAN ADG	WEAN\$	ADJ 365	YRLG RATIO	POST WEAN ADG	WPDA	ADG\$	
	757	106	3.21	PLAT	1167	96	2.56	3.27	GOLD	
ULTRASOUND	MARB	MARB\$	BF	REA	%LMY	REA IN^2/100	MUS\$			
	A	GOLD	3.81	12.38	64.91	1.17	GOLD			

31

HWY *General Lee* 79J

Scurred 3/8/2021 HWY 79J MC818282

EATONS GENERAL LEE 20015P
PH GENERAL LEE 96F
PH TATUM 79A

MAIN SILVER RUSH 115D
MAIN RUSH IMAGE 910G
MAIN COBB'S IMAGE 262Z

BW: 108 lbs. AOD: 2 Dam Index: 101.6 Doc: 3

EPDS	CE	BW	WW	YW	MILK	MTL	CW	REA	FAT	MARB
	2.2	3.8	55	109	30	57	27	0.66	0.756	0.65
%RK	85	95	10	10	2	1	10	10	60	20
PERF METRICS	ADJ 205	WEAN RATIO	WEAN ADG	WEAN\$	ADJ 365	YRLG RATIO	POST WEAN ADG	WPDA	ADG\$	
	773	109	2.93	GOLD	1214	100	2.76	3.22	GOLD	
ULTRASOUND	MARB	MARB\$	BF	REA	%LMY	REA IN^2/100	MUS\$			
	A	SILVER	3.33	12.68	65.64	1.26	GOLD			

HIGHWAY 21 GROUP CHROLAIS
& SIMM/ANGUS BULL SALE





HWY *Granada* 504H

Horned 12/1/2020 HWY 504H MC828068

LT LANZA 1427 PLD
MAIN GRANADA 191E
MAIN UNIVERSAL 1022X

MERIT ROUNDUP 9508W
TMJF CARRIE 504C
FFBB ASHLEY PLD 807U

BW: 95 lbs. AOD: 5 Dam Index: 103.3 Doc: 3

EPDS	CE	BW	WW	YW	MILK	MTL	CW	REA	FAT	MARB
	11.5	-3.1	41	85	18	38	12	0.43	0.324	0.54
%RK	10	10	75	55	85	90	85	55	25	25
PERF METRICS	ADJ 205	WEAN RATIO	WEAN ADG	WEANS	ADJ 365	YRLG RATIO	POST WEAN ADG	WPDA	ADGS	
	642		2.67	SILVER	1102		2.87	2.98	GOLD	
ULTRASOUND	MARB	MARB\$	BF	REA	%LMY	REA IN*2/100	MUS\$			
	A	SILVER	2.92	12.33	65.78	1.18	GOLD			



PERFORMANCE
LIVESTOCK ANALYTICS
part of **zoetis**

SMART MADE SIMPLE.

Performance Beef simplifies feed, performance and health data collection - without double entry or complicated software - making it easy to:

- Build and change rations digitally
- Create accurate invoices
- Generate real-time closeout reports
- Track pen and pasture treatments
- Make data-driven health decisions

LET'S GET STARTED

Visit PerformanceLivestockAnalytics.com to request a demo.

Scan here to try it yourself!



SCAN ME

All trademarks are property of Zoetis Services LLC or a related company or a licensor unless otherwise noted.



CHAROLAIS REFERENCE SIREs

SIRE	CE	BW	WW	YW	Milk	MTL	CW	REA	FAT	MARB
JSR Estrada 52E	4.3	0.9	79	152	18	58	39	0.73	2.153	1.64
Rawes Sir T 123Y	4	1.5	66	126	30	63	37	1.15	1.543	2.32
RGP Everglade 31G	7.6	-1.2	61	123	20	51	30	0.53	1.822	0.74
SOS Home Grown 15C	-1.5	2.8	60	113	6	36	26	0.51	0.095	0.52
PH General Lee 96F	4.1	2.8	5.4	110	27	54	26	0.66	0.959	1.43
SOS Apex PLD 139F	11.8	-4	53	105	15	42	16	0.50	1.391	1.39
Main Ledger Up 4C	12.7	-3.3	54	102	13	41	15	0.42	1.213	1.37
Main Ledger Up 105E	10.6	-1.9	50	102	24	50	20	0.45	1.264	0.77
Main Gibson 56G	6.8	-1.8	46	99	31	54	20	0.49	1.137	0.21
Main Ledgers Shadow 26D	7.6	-0.07	52	98	25	51	21	0.56	1.238	1.14
Circle Cee Legend 307A	15.9	-6.4	49	97	35	60	12	0.65	2.534	-0.43
Main Granada 191E	15	-3.6	45	97	22	44	17	0.52	1.162	0.60
Wrangler Maximus 74E	9.7	-2.5	48	95	20	44	14	0.5	0.679	0.63
Sparrows Aquarius 493B	12.8	-1.3	41	93	21	41	15	0.41	0.451	0.84
C2 Pharoah 79F	6.3	-2.5	45	91	20	43	13	0.38	0.705	0.91
MVY Goodyear 19G	1.6	5	42	86	18	39	21	0.47	0.400	0.58
MRF Pure Power 3D	7.1	-0.2	44	83	18	40	16	0.39	0.451	1.43
Cedarlea Lincoln 28D	14.7	-5.8	39	79	32	51	6	0.47	1.441	-0.69
Brww Free Choice 3F	3.1	3	40	77	24	44	21	0.38	0.400	0.42
Main Paycheck 118F	10.4	-1.8	38	77	26	45	15	0.51	1.238	0.83
LT Affinity 6221 PLD	18.6	-6.9	40	76	25	45	4	0.16	1.467	0.91
M&M Outsider 4003 PLD	11.1	-2.3	37	66	21	39	6	0.18	1.060	-0.06
FLM Mr Charmark 21E	5.5	-0.1	31	60	19	35	7	0.4	-0.641	-0.04



JSR Estrada 52E



RGP Everglade 31G

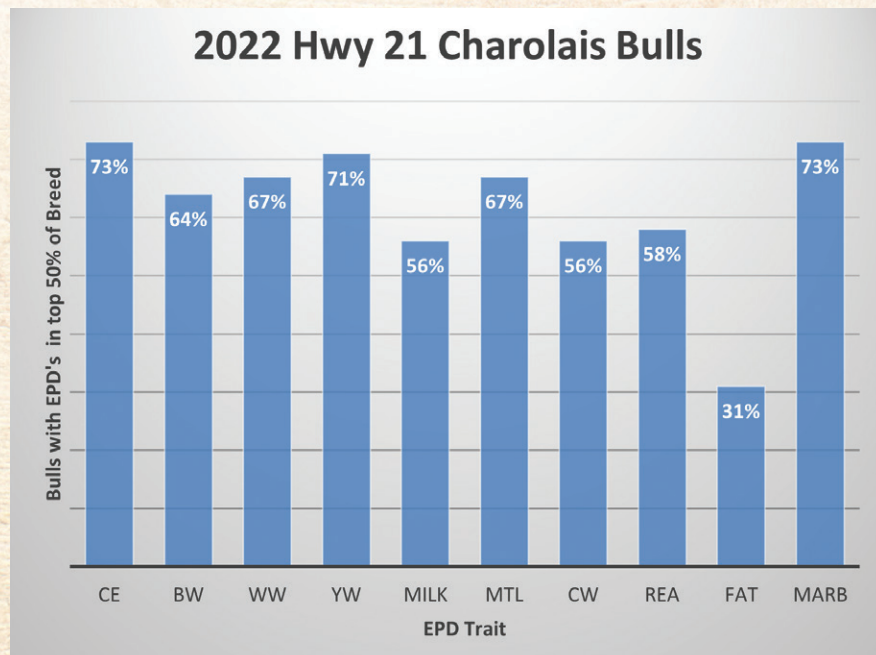


HOW OUR BULLS MEASURE UP

Jan 2022 - Canadian Charolais Breed Average Sire EPD's

CE	BW	WW	YW	MILK	MTL	CW	REA	FAT	MARB
5.8	0.5	44.8	85.9	21	43.4	17.1	0.45	0.65	0.2

Our 45 Charolais Bulls



After comparing our Charolais Sale Bulls to the average Canadian Charolais EPD, here is how ours measure up. The percentages represent how many bulls rank in the top 50% for each trait.

TWO YEAR OLD CHAROLAIS BULLS



33

HWY 984H

4th Gen Poll 2/20/2020 HWY 984H MC801906

C2 CARLOS 33C
C2 PHAROAH 79F
ZWB BRIDGET 69D

CEDARLEA SHOELESS JOE 83C
TURNBULL'S MISS SHAWNA 984F
CTP MISS ROBIN 666C

BW: 95 lbs. AOD: 2 Dam Index: 106.9 Doc: 3

EPDS	CE	BW	WW	YW	MILK	MTL	CW	REA	FAT	MARB
	7.9	-1.4	55	104	23	51	19	0.53	1.264	0.6
%RK	30	20	10	15	30	10	40	25	90	25
PERF METRICS	ADJ 205	WEAN RATIO	WEAN ADG	WEAN\$	ADJ 365	YRLG RATIO	POST WEAN ADG	WPDA	ADG\$	
	755		2.85	PLAT	1112		2.23	2.87	SILVER	

Out of a first calf heifer. One of the top 2-year-old bulls in the pen. His maternal brother HWY 33J is in the top of the yearling pen. Miss Shawna is one of our highest HAPI indexed cows in our herd. She is off to a good start with her first 2 calves.

34

HWY 137H

2nd Gen Poll 2020-04-28 HWY 137H MC801865

FLM FOLEY 69X
FLM MR CHARMARK 21E
FLM MISS CHARMARK ET 52A

NCC SILVER STAR 31T
LM MISS MCKAY 1212Y
LM MISS MCKAY 8105U

BW: 108 lbs. AOD: 7 Dam Index: 190.3 Doc: 3

EPDS	CE	BW	WW	YW	MILK	MTL	CW	REA	FAT	MARB
	4	1.3	39	76	18	37	14	0.44	-0.184	-0.19
%RK	70	60	80	80	80	95	70	50	10	85
PERF METRICS	ADJ 205	WEAN RATIO	WEAN ADG	WEAN\$	ADJ 365	YRLG RATIO	POST WEAN ADG	WPDA	ADG\$	
	698	100	2.83	PLAT	1136	101	2.74	3.12	PLAT	





35

HWY 141H

2nd Gen Poll 2020-01-27 HWY 141H MC801973

ANJOU PURE POWER 184Y
MRF PURE POWER 3D
PALE LADY SARA 12A

POST YAMASKA 90Y
POST ARMENIA 141A
POST URSULA 141U

BW: 75 lbs. AOD: 7 Dam Index: 100.7 Doc: 3

EPDS	CE	BW	WW	YW	MILK	MTL	CW	REA	FAT	MARB
	16	-6.3	34	68	17	33	3	0.22	1.06	1.32
%RK	1	1	95	95	90	100	100	100	80	2
PERF METRICS	ADJ 205	WEAN RATIO	WEAN ADG	WEANS	ADJ 365	YRLG RATIO	POST WEAN ADG	WPDA	ADGS	
	538	86	2.28	SILVER	921	93	2.39	2.48	SILVER	

36

HWY 173H

2nd Gen Poll 2020-05-03 HWY 173H MC801867

FLM FOLEY 69X
FLM MR CHARMARK 21E
FLM MISS CHARMARK ET 52A

NCC SILVER STAR 31T
LM MISS MCKAY 1212Y
LM MISS MCKAY 8105U

BW: 106 lbs. AOD: 7 Dam Index: 190.3 Doc: 3

EPDS	CE	BW	WW	YW	MILK	MTL	CW	REA	FAT	MARB
	9.6	-2	27	59	18	31	4	0.37	-0.286	0.13
%RK	20	15	100	100	80	100	100	75	10	60
PERF METRICS	ADJ 205	WEAN RATIO	WEAN ADG	WEANS	ADJ 365	YRLG RATIO	POST WEAN ADG	WPDA	ADGS	
	700	101	2.85	PLAT	1139	101	2.74	3.13	PLAT	






HWY 215H

3rd Gen Poll 5/5/2020 HWY 215H MC801875

WCR SIR TERRIFIC 8123H
RAWES SIR T 123Y
RAWES ROSE 60S

NCC SILVER STAR 31T
LM MISS MCKAY 1212Y
LM MISS MCKAY 8105U

BW: 110 lbs. AOD: 5 Dam Index: 190.3 Doc: 3

	CE	BW	WW	YW	MILK	MTL	CW	REA	FAT	MARB
	4.6	1.4	53	100	21	47	23	0.75	0.527	1.4
%RK	65	65	15	20	55	25	20	3	40	1
PERF METRICS	ADJ 205	WEAN RATIO	WEAN ADG	WEANS	ADJ 365	YRLG RATIO	POST WEAN ADG	WPDA	ADGS	
	657	94	2.62	GOLD	1208	108	3.44	3.25	ELITE	

One of our top sons of Rawes Sir T 123Y. You can spot him and his flush mates easily. Sir T is in the top 1% of the breed for WW, YW, CW, Marb, REA, LMY, Milk and MTL. This one took the prize for YW index in our pen. He is smooth and carries that extra length that Rawes cattle are known for.

RGR Farm Ltd.

SHARPE'S
TRUCKING
MUNSON, AB



403820-4482 Randy
403823-1919 George





38

HWY 242H

3rd Gen Poll 5/6/2020 HWY 242H MC801870

WCR SIR TERRIFIC 8123H

NCC SILVER STAR 31T

RAWES SIR T 123Y

LM MISS MCKAY 1212Y

RAWES ROSE 60S

LM MISS MCKAY 8105U

BW: 110 lbs. AOD: 7 Dam Index: 190.3 Doc: 3

	CE	BW	WW	YW	MILK	MTL	CW	REA	FAT	MARB
	4.9	0.4	52	100	20	47	24	0.66	1.289	1.54
%RK	60	45	20	20	60	30	15	10	90	1
PERF METRICS	ADJ 205	WEAN RATIO	WEAN ADG	WEAN\$	ADJ 365	YRLG RATIO	POST WEAN ADG	WPDA	ADG\$	
	708	102	2.87	PLAT	1105	98	2.48	3.07	GOLD	

"In early 2021 I purchased 2 bulls from The Highway 21 Group. The online platform was easy to navigate and gave me a clear view of what each bull had to offer. It gave me the capability to access data, see photos and look at Herdtrax data on the sires and dams as well as organize the bulls in which order I deemed important. It saved time and gave me confidence in the bulls I chose. A last minute injury on a bull I had owned for years left me short days before breeding season. Lyle and Joe leased and delivered a quality bull in less than 24 hours. That bull after 4 weeks broke himself and after a quick text to Lyle on a Sunday afternoon, a replacement was delivered by Joe the next day before noon. Excellent customer service. Great breeding bulls. This fall when Dr. Wise preg checked my herd of around 100 head, I had 100 percent conception rate. Very pleased to deal with Highway 21 Group."

Kurt Hagel
Beiseker, Alberta





39

HWY 244H

Horned 2020-05-06 HWY 244H MC801871

WCR SIR TERRIFIC 8123H
RAWES SIR T 123Y
RAWES ROSE 60S

NCC SILVER STAR 31T
LM MISS MCKAY 1212Y
LM MISS MCKAY 8105U

BW: 100 lbs. AOD: 5 Dam Index: 190.3 Doc: 2

	CE	BW	WW	YW	MILK	MTL	CW	REA	FAT	MARB
	6.2	0.9	49	90	22	46	21	0.75	0.756	0.87
%RK	50	55	30	40	45	30	30	3	60	10
PERF METRICS	ADJ 205	WEAN RATIO	WEAN ADG	WEANS	ADJ 365	YRLG RATIO	POST WEAN ADG	WPDA	ADG\$	
	674	97	2.75	PLAT	1079	96	2.53	2.98	GOLD	

40

HWY 246H

Horned 2020-05-06 HWY 246H MC801873

FLM FOLEY 69X
FLM MR CHARMARK 21E
FLM MISS CHARMARK ET 52A

NCC SILVER STAR 31T
LM MISS MCKAY 1212Y
LM MISS MCKAY 8105U

BW: 112 lbs. AOD: 7 Dam Index: 190.3 Doc: 2

	CE	BW	WW	YW	MILK	MTL	CW	REA	FAT	MARB
	7.4	-0.8	35	65	15	33	7	0.31	-0.006	0.07
%RK	35	25	95	95	95	100	95	90	15	65
PERF METRICS	ADJ 205	WEAN RATIO	WEAN ADG	WEANS	ADJ 365	YRLG RATIO	POST WEAN ADG	WPDA	ADG\$	
	702	101	2.83	PLAT	1148	102	2.79	3.16	PLAT	





41

HWY 247H

Scurred 2020-05-06 HWY 247H MC801874

FLM FOLEY 69X NCC SILVER STAR 31T
FLM MR CHARMARK 21E LM MISS MCKAY 1212Y
FLM MISS CHARMARK ET 52A LM MISS MCKAY 8105U

BW: 102 lbs. AOD: 6 Dam Index: 190.3 Doc: 3

	CE	BW	WW	YW	MILK	MTL	CW	REA	FAT	MARB
	7.6	-0.6	29	60	17	31	5	0.27	-0.362	0.02
%RK	35	30	100	100	90	100	100	95	5	70
PERF METRICS	ADJ 205	WEAN RATIO	WEAN ADG	WEANS	ADJ 365	YRLG RATIO	POST WEAN ADG	WPDA	ADGS	
	739	106	3.06	ELITE	1090	97	2.19	3.06	SILVER	



42

HWY 254H

3rd Gen Poll 2020-05-04 HWY 254H MC801877

WCR SIR TERRIFIC 8123H NCC SILVER STAR 31T
RAWES SIR T 123Y LM MISS MCKAY 1212Y
RAWES ROSE 60S LM MISS MCKAY 8105U

BW: 95 lbs. AOD: 6 Dam Index: 190.3 Doc: 2

	CE	BW	WW	YW	MILK	MTL	CW	REA	FAT	MARB
	5.7	0.8	48	95	25	49	23	0.7	0.654	0.92
%RK	55	55	35	30	15	15	20	4	50	10
PERF METRICS	ADJ 205	WEAN RATIO	WEAN ADG	WEANS	ADJ 365	YRLG RATIO	POST WEAN ADG	WPDA	ADGS	
	704	101	2.92	ELITE	1155	103	2.82	3.18	PLAT	





Rawes Sir T 123Y
Sire of Lot 43



LOT 44

43

HWY 279H

3rd Gen Poll 2020-05-05 HWY 279H MC801880

WCR SIR TERRIFIC 8123H
RAWES SIR T 123Y
RAWES ROSE 60S

NCC SILVER STAR 31T
LM MISS MCKAY 1212Y
LM MISS MCKAY 8105U

BW: 112 lbs. AOD: 6 Dam Index: 190.3 Doc: 3

EPDS	CE	BW	WW	YW	MILK	MTL	CW	REA	FAT	MARB
	3.1	2.1	45	90	23	45	24	0.71	0.527	1.35
%RK	80	75	50	45	35	40	15	3	40	2
PERF METRICS	ADJ 205	WEAN RATIO	WEAN ADG	WEAN\$	ADJ 365	YRLG RATIO	POST WEAN ADG	WPDA	ADG\$	
	669	96	2.67	GOLD	1047	93	2.36	2.9	SILVER	

44

HWY 740H

Scurred 2020-04-02 HWY 740H MC801892

ANJOU PURE POWER 184Y
MRF PURE POWER 3D
PALE LADY SARA 12A

POST ALASKA 836A
POST MISS ALASKA 740D
POST XELLA 740X

BW: 106 lbs. AOD: 4 Dam Index: 100.8 Doc: 3

EPDS	CE	BW	WW	YW	MILK	MTL	CW	REA	FAT	MARB
	5.9	1.4	37	71	19	37	13	0.31	-0.057	0.88
%RK	50	65	90	90	75	95	75	90	10	10
PERF METRICS	ADJ 205	WEAN RATIO	WEAN ADG	WEAN\$	ADJ 365	YRLG RATIO	POST WEAN ADG	WPDA	ADG\$	
	610	103	2.38	SILVER	1133		3.27	2.96	ELITE	

45

HWY 954H

Scurred 2020-02-07 HWY 954H MC801904

CIRCLE CEE LEGEND 307A
CEDARLEA LINCOLN 28D
CEDARLEA UZA 12B

STEPLER BLUE PRINT 64C
TURNBULLS MISS SASHA 954F
CTP MISS CLINIQUE 308Z

BW: 102 lbs. AOD: 2 Dam Index: 105.2 Doc: 2

EPDS	CE	BW	WW	YW	MILK	MTL	CW	REA	FAT	MARB
	10.3	-2.5	44	80	28	50	11	0.42	1.111	-0.35
%RK	15	10	55	70	4	10	85	55	80	90
PERF METRICS	ADJ 205	WEAN RATIO	WEAN ADG	WEAN\$	ADJ 365	YRLG RATIO	POST WEAN ADG	WPDA	ADG\$	
	719	114	2.64	Gold	1055	107	2.1	2.69	Silver	



LOT 45



PROSTOCK®

Exclusively at UFA

HERD HEALTH.

WE'VE HEARD YOU.



GET IT. **UFA** DONE.

You know your herd. You know what they need to gain and be healthy. That's why we developed ProStock to answer your need for the right minerals for all stages of cattle development.

UFA.com/ProStock

COMPOSITE BULLS



LOT 47



Rawes Sir T 123Y
Sire of Lot 46

46

HWY 281H

Polled 2020-05-07 HWY 281H White 3/4 Charolais

WCR SIR TERRIFIC 8123H

RAWES SIR T 123Y

RAWES ROSE 60S

Red 6610-D

BW: 108 lbs. AOD: 4 Dam Index: 105.2 Doc: 3 CE: 1

PERF METRICS	ADJ 205	WEAN RATIO	WEAN ADG	WEANS	ADJ 365	YRLG RATIO	POST WEAN ADG	WPDA	ADGS
	759	127	3.18	PLAT	1209	111	2.79	3.01	PLAT

3/4 CHAROLAIS

47

HWY 17H

Polled 2020-03-25 HWY 17H Black 50% Angus, 25% Gelbvieh

HF Thunderbird 146Y

PM THUNDERBIRD 14'14

KFC 205 Valley 9703W

DVE Davidson Justmore 43Y

Red 8144-F

Red 5475-C

BW: 87 lbs. AOD: 2 Dam Index: 99.9 Doc: 3 CE: 3

PERF METRICS	ADJ 205	WEAN RATIO	WEAN ADG	WEANS	ADJ 365	YRLG RATIO	POST WEAN ADG	WPDA	ADGS
	557	93	2.29	SILVER	990	93	2.96	2.47	PLAT

FEED CONV. INFO	RFI	FCR	CONV.\$
	-0.31	5.45	PLAT

48

HWY 31H

Polled 2020-03-30 HWY 31H Black 50% Simmental, 25% Angus

Ol' Odin U5

KWA ODIN 29A

KWA MS ENTICER 45Y

Valleymere TTT Mandate 93A

Red 8231-F

Red 3151-A

BW: 97 lbs. AOD: 2 Dam Index: 100.3 Doc: 3 CE: 1

PERF METRICS	ADJ 205	WEAN RATIO	WEAN ADG	WEANS	ADJ 365	YRLG RATIO	POST WEAN ADG	WPDA	ADGS
	625	104	2.58	SILVER	1022	97	2.41	2.53	GOLD

FEED CONV. INFO	RFI	FCR	CONV.\$
	0.83	6.68	SILVER



LOT 48

HAVE YOU CONSIDERED?

One of the best ways to maintain your crossbred percentages in your replacement females is to breed with crossbred bulls so you do not stack or dilute one breed over another. In this sale group, there is an excellent selection of dual-purpose sires that will produce outstanding females. We have their ancestry's maternal indexes to help select for your specific breeding goals.





49

HWY 47H

Polled 2020-04-03 HWY 47H Black 50% Simmental

Olf Odin U5

KWA ODIN 29A

KWA MS ENTICER 45Y

Red 8462-F

Red 4608-B

BW: 102 lbs. AOD: 2 Dam Index: 102.3 Doc: 3 CE: 2

PERF METRICS	ADJ 205	WEAN RATIO	WEAN ADG	WEAN\$	ADJ 365	YRLG RATIO	POST WEAN ADG	WPDA	ADG\$
	602	100	2.44	SILVER	977	93	2.28	2.39	GOLD
FEED CONV. INFO	RFI	FCR	CONV.\$						
	0.22	5.52	GOLD						



50

HWY 100H

Polled 2020-04-28 HWY 100H Black 50% Angus, 25% Simmental

PM Thunderbird 14'14-B

HWY Thunderbird 8703

Red 4199-B

KWA Odin 29A

Red 8303-F

Red 4192-B

BW: 101 lbs. AOD: 2 Dam Index: 102.6 Doc: 3 CE: 1

PERF METRICS	ADJ 205	WEAN RATIO	WEAN ADG	WEAN\$	ADJ 365	YRLG RATIO	POST WEAN ADG	WPDA	ADG\$
	648	110	2.67	SILVER	1128	107	3.13	2.81	PLAT
FEED CONV. INFO	RFI	FCR	CONV.\$						
	-0.92	4.95	ELITE						



51

HWY 104H

Polled 2020-04-23 HWY 104H Black 50% Simmental

HSF HIGH ROLLER 12T

SKORS HIGH ROLLER 94B

SKORS DAKOTA 241Z

Red 5437-C

BW: 94 lbs. AOD: 5 Dam Index: 101.6 Doc: 3 CE: 2

PERF METRICS	ADJ 205	WEAN RATIO	WEAN ADG	WEAN\$	ADJ 365	YRLG RATIO	POST WEAN ADG	WPDA	ADG\$
	708	113	3	GOLD	1133	103	2.47	2.84	GOLD
FEED CONV. INFO	RFI	FCR	CONV.\$						
	-0.76	5.39	PLAT						

Look no further for performance and overall feed efficiency than right here.



52

HWY 106H

Polled 2020-04-24 HWY 106H Black 25% Angus

PM Thunderbird 14'14-B

HWY Thunderbird 7312

Red 3163-A

Red 3117-A

BW: 104 lbs. AOD: 7 Dam Index: 101.8 Doc: 3 CE: 1

PERF METRICS	ADJ 205	WEAN RATIO	WEAN ADG	WEANS	ADJ 365	YRLG RATIO	POST WEAN ADG	WPDA	ADG\$
	672	107	2.77	GOLD	1080	98	2.42	2.67	GOLD
FEED CONV. INFO				RFI	FCR	CONV.\$			
				0.76	6.66	SILVER			



53

HWY 107H

Polled 2020-04-24 HWY 107H Black 50% Angus

Sitz Upward 307R

ATLASTA UPWARD 75B

Red 3224-A

BB Annie 19P

BW: 106 lbs. AOD: 7 Dam Index: 104.2 Doc: 3 CE: 1

PERF METRICS	ADJ 205	WEAN RATIO	WEAN ADG	WEANS	ADJ 365	YRLG RATIO	POST WEAN ADG	WPDA	ADG\$
	588	93	2.35	SILVER	879	80	1.52	2.11	SILVER
				FEED CONV. INFO	RFI	FCR	CONV.\$		
					-0.54	5.05	ELITE		





HWY 110H

Polled 2020-04-25 HWY 110H Black Composite

PERF METRICS	ADJ 205	WEAN RATIO	WEAN ADG	WEANS	ADJ 365	YRLG RATIO	POST WEAN ADG	WPDA	ADGS
	687	109	2.88	Gold	1121	102	2.61	2.8	Gold

FEED CONV. INFO	RFI	FCR	CONV.\$
	0.56	6.36	Silver

SIRE NOT VERIFIED

Red 4481-B

BW: 96 lbs. AOD: 6 Dam Index: 106.8 Doc: 3 CE: 2

MNP

**Your competitive edge
in a dynamic industry**

To stay competitive and profitable, you are challenged to look at both sides of the equation – the day-to-day costs, trends and influences on your bottom line, as well as the key operational considerations. Get the most from your operation, with our help.



Chub Lundago, Manager, Business Development | 403.596.6952 | chub@mnp.ca

Wherever business takes you

[MNP.ca](https://mnp.ca)





55

HWY 124H

Polled 2020-04-26 HWY 124H Black 50% Simmental

MADER DICTATOR 27Z

ULTRA DICTATOR 16B

ULTRA JOKER PRIDE 109N

Red 5257-C

Red 2408-Z

BW: 103 lbs. AOD: 5 Dam Index: 105.5 Doc: 3 CE: 1

PERF METRICS	ADJ 205	WEAN RATIO	WEAN ADG	WEAN\$	ADJ 365	YRLG RATIO	POST WEAN ADG	WPDA	ADG\$
	607	96	2.46	SILVER	1061	96	3	2.62	PLAT

FEED CONV. INFO	RFI	FCR	CONV.\$
	-0.34	5.15	ELITE

56

HWY 141H

Polled 2020-04-28 HWY 141H Red 50% Simmental

HSF HIGH ROLLER 12T

SKORS HIGH ROLLER 94B

SKORS DAKOTA 241Z

Yel 206-X

BW: 105 lbs. AOD: 10 Dam Index: 110.2 Doc: 3 CE: 1

PERF METRICS	ADJ 205	WEAN RATIO	WEAN ADG	WEAN\$	ADJ 365	YRLG RATIO	POST WEAN ADG	WPDA	ADG\$
	675	107	2.78	GOLD	1121	102	2.76	2.77	PLAT

FEED CONV. INFO	RFI	FCR	CONV.\$
	1.34	5.92	SILVER





HWY 145H

Polled 2020-04-29 HWY 145H Red 50% Gelbvieh

Secret Weapon 6S

DVE Davidson Justmore 43Y

Davidson Miss Jim 1N

Red 2208-Z

BW: 101 lbs. AOD: 8 Dam Index: 110.6 Doc: 3 CE: 2

PERF METRICS	ADJ 205	WEAN RATIO	WEAN ADG	WEAN\$	ADJ 365	YRLG RATIO	POST WEAN ADG	WPDA	ADG\$
	694	111	2.89	GOLD	1106	100	2.39	2.75	GOLD

FEED CONV. INFO	RFI	FCR	CONV.\$
	0.04	5.44	PLAT



403-934-0988

HIGHWAY 21 GROUP CHROLAIS
& SIMM/ANGUS BULL SALE



58

HWY 146H

Polled 2020-04-29 HWY 146H Black Composite

Red 6218

Red 2331-Z

BW: 82 lbs. AOD: 8 Dam Index: 104.8 Doc: 3 CE: 3

PERF METRICS	ADJ 205	WEAN RATIO	WEAN ADG	WEAN\$	ADJ 365	YRLG RATIO	POST WEAN ADG	WPDA	ADG\$
	717	116	3.1	PLAT	1162	106	2.73	2.96	PLAT
FEED CONV. INFO	RFI	FCR	CONV.\$						
	-0.39	5.79	GOLD						

59

HWY 147H

Polled 2020-04-29 HWY 147H Black 25% Simmental

KWA Odin 29A

HWY Odin 8634F
6095-D

Red 4479-B

BW: 85 lbs. AOD: 6 Dam Index: 104.1 Doc: 3 CE: 1

PERF METRICS	ADJ 205	WEAN RATIO	WEAN ADG	WEAN\$	ADJ 365	YRLG RATIO	POST WEAN ADG	WPDA	ADG\$
	626	101	2.64	SILVER	1125	102	3.2	2.85	PLAT
FEED CONV. INFO	RFI	FCR	CONV.\$						
	-0.32	5.44	PLAT						





HWY 157H

Polled 2020-04-30 HWY 157H Red 50% Simmental

HSF HIGH ROLLER 12T
SKORS HIGH ROLLER 94B Red 4150-B
SKORS DAKOTA 241Z

BW: 110 lbs. AOD: 6 Dam Index: 103.4 Doc: 3 CE: 1

PERF METRICS	ADJ 205	WEAN RATIO	WEAN ADG	WEANS	ADJ 365	YRLG RATIO	POST WEAN ADG	WPDA	ADGS
	600	95	2.39	SILVER	1055	96	3.01	2.58	PLAT

FEED CONV. INFO	RFI	FCR	CONV.\$
	-0.09	5.33	PLAT



HWY 162H

Polled 2020-04-30 HWY 162H Black 25% Simmental

KWA Odin 29A
HWY Odin 8634F Red 3289-A
6095-D

BW: 95 lbs. AOD: 7 Dam Index: 102.9 Doc: 3 CE: 2

PERF METRICS	ADJ 205	WEAN RATIO	WEAN ADG	WEANS	ADJ 365	YRLG RATIO	POST WEAN ADG	WPDA	ADGS
	612	97	2.52	SILVER	1012	92	2.48	2.51	GOLD

FEED CONV. INFO	RFI	FCR	CONV.\$
	-0.55	4.94	ELITE





HWY 174H

Polled 2020-05-01 HWY 174H Black 25% Angus

PM Thunderbird 14'14-B

HWY Thunderbird 7312

Red 3248-A

Red 3117-A

BW: 100 lbs. AOD: 7 Dam Index: 99.7 Doc: 3 CE: 2

PERF METRICS	ADJ 205	WEAN RATIO	WEAN ADG	WEANS	ADJ 365	YRLG RATIO	POST WEAN ADG	WPDA	ADGS
	714	116	2.99	GOLD	1141	104	2.59	2.84	PLAT
FEED CONV. INFO	RFI	FCR	CONV.\$						
	-0.19	5.51	GOLD						



HWY 223H

Polled 2020-05-04 HWY 223H Black 50% Simmental

Olif Odin U5

KWA ODIN 29A

Red 6188-D

KWA MS ENTICER 45Y

Red 4269-B

BW: 95 lbs. AOD: 4 Dam Index: 102.5 Doc: 3

PERF METRICS	ADJ 205	WEAN RATIO	WEAN ADG	WEANS	ADJ 365	YRLG RATIO	POST WEAN ADG	WPDA	ADGS
	795	128	3.36	PLAT	1255	113	2.44	3.08	PLAT
FEED CONV. INFO	RFI	FCR	CONV.\$						
	-1.33	4.86	ELITE						



HWY 237H

Polled 2020-05-06 HWY 237H Black 50% Simmental

ELLINGSON LEGACY M229

MR NLC UPGRADE U8676

Red 5048-C

MS NLC MOJO S6119 B

Yel 413

BW: 95 lbs. AOD: 5 Dam Index: 106.2 Doc: 3 CE: 1

PERF METRICS	ADJ 205	WEAN RATIO	WEAN ADG	WEANS	ADJ 365	YRLG RATIO	POST WEAN ADG	WPDA	ADGS
	634	102	2.63	SILVER	1201	107	3.43	3.03	ELITE
FEED CONV. INFO	RFI	FCR	CONV.\$						
	-0.71	4.75	ELITE						

Ranked number 2 for RFI in the group and #1 for FCR. His dam holds one of the highest HAPI indexes in our herd.





HWY 253H

Polled 2020-05-04 HWY 253H Black 25% Angus

PM Thunderbird 14'14-B

HWY Thunderbird 7312

Red 3358-A

Red 3117-A

BW: 90 lbs. AOD: 7 Dam Index: 102.8 Doc: 3 CE: 1

PERF METRICS	ADJ 205	WEAN RATIO	WEAN ADG	WEAN\$	ADJ 365	YRLG RATIO	POST WEAN ADG	WPDA	ADG\$
	700	112	2.98	GOLD	1139	104	2.63	2.87	PLAT
FEED CONV. INFO	RFI	FCR	CONV.\$						
	-0.14	5.92	GOLD						



HWY 261H

Polled 2020-05-06 HWY 261H Black 50% Simmental

Olf Odin U5

KWA ODIN 29A

Red 4312-B

KWA MS ENTICER 45Y

BW: 95 lbs. AOD: 6 Dam Index: 104.4 Doc: 3 CE: 2

PERF METRICS	ADJ 205	WEAN RATIO	WEAN ADG	WEAN\$	ADJ 365	YRLG RATIO	POST WEAN ADG	WPDA	ADG\$
	650	104	2.71	GOLD	1242	110	3.58	3.15	ELITE
FEED CONV. INFO	RFI	FCR	CONV.\$						
	-0.05	5.17	PLAT						



HWY 291H

Polled 2020-05-08 HWY 291H Black 50% Gelbvieh

Secret Weapon 6S

DVE Davidson Justmore 43Y

Red 6177-D

Davidson Miss Jim 1N

Red 4168-B

BW: 102 lbs. AOD: 4 Dam Index: 105 Doc: 3 CE: 2

PERF METRICS	ADJ 205	WEAN RATIO	WEAN ADG	WEAN\$	ADJ 365	YRLG RATIO	POST WEAN ADG	WPDA	ADG\$
	637	104	2.61	SILVER	1184	106	3.33	2.97	PLAT
FEED CONV. INFO	RFI	FCR	CONV.\$						
	-0.06	5.55	GOLD						





68

HWY 296H

Polled 2020-05-08 HWY 296H Black 25% Simmental

KWA Odin 29A

HWY Odin 8634F

Red 6095-D

Red 4143-B

BW: 95 lbs. AOD: 6 Dam Index: 103.1 Doc: 3

PERF METRICS	ADJ 205	WEAN RATIO	WEAN ADG	WEAN\$	ADJ 365	YRLG RATIO	POST WEAN ADG	WPDA	ADG\$
	618	99	2.56	SILVER	1201	108	3.56	3.07	ELITE

FEED CONV. INFO	RFI	FCR	CONV.\$
	-0.30	5.20	PLAT

69

HWY 297H

Polled 2020-05-09 HWY 297H Black 25% Angus

PM Thunderbird 14'14-B

HWY Thunderbird 7312

Red 3117-A

Red 3350-A

BW: 110 lbs. AOD: 7 Dam Index: 102.2 Doc: 3 CE: 1

PERF METRICS	ADJ 205	WEAN RATIO	WEAN ADG	WEAN\$	ADJ 365	YRLG RATIO	POST WEAN ADG	WPDA	ADG\$
	644	103	2.61	SILVER	1288	114	3.85	3.24	ELITE

FEED CONV. INFO	RFI	FCR	CONV.\$
	-0.3	5.03	ELITE

Another son of 7312 that earned himself a spot as one of the ELITE performance and Feed Efficient bulls offered.





70

HWY 300H

Polled 2020-05-10 HWY 300H Black 25% Simmental

KWA Odin 29A

HWY Odin 8158F
4146-B

Red 5473-C

BW: 85 lbs. AOD: 5 Dam Index: 105.4 Doc: 3 CE: 1

PERF METRICS	ADJ 205	WEAN RATIO	WEAN ADG	WEAN\$	ADJ 365	YRLG RATIO	POST WEAN ADG	WPDA	ADG\$
	690	111	2.95	GOLD	1188	106	3.09	3.02	PLAT

FEED CONV. INFO	RFI	FCR	CONV.\$
	-0.02	5.34	PLAT

71

HWY 335H

Polled 2020-05-12 HWY 335H Black 25% Angus

PM Thunderbird 14'14-B

HWY Thunderbird 7312
Red 3117-A

Red 3186-A

BW: 92 lbs. AOD: 7 Dam Index: 103.3 Doc: 3 CE: 1

PERF METRICS	ADJ 205	WEAN RATIO	WEAN ADG	WEAN\$	ADJ 365	YRLG RATIO	POST WEAN ADG	WPDA	ADG\$
	707	116	3	GOLD	1177	105	2.96	2.97	PLAT

FEED CONV. INFO	RFI	FCR	CONV.\$
	-0.25	4.93	ELITE

A 7312 son measuring tremendous feed efficiency, performance, and WW index.





72

HWY 352H

Scurred 2020-05-12 HWY 352H Black 75% Angus

F V Mandate Man 146Y
VALLEYMERE TTT MANDATE 113B
Valleymere TTT Queen 12U

RCC Predestined 7S
Red 7054-E
Red 5465-C

BW: 105 lbs. AOD: 3 Dam Index: 103 Doc: 3 CE: 1

PERF METRICS	ADJ 205	WEAN RATIO	WEAN ADG	WEAN\$	ADJ 365	YRLG RATIO	POST WEAN ADG	WPDA	ADG\$
	746	125	3.13	PLAT	1317	120	3.52	3.33	ELITE
FEED CONV. INFO	RFI	FCR	CONV.\$						
	1.96	6.55	SILVER						

73

HWY 369H

Polled 2020-05-15 HWY 369H Black 25% Simmental

KWA Odin 29A
HWY Odin 8634F
6095-D

Yel 321-Y

BW: 92 lbs. AOD: 9 Dam Index: 109.4 Doc: 3 CE: 1

PERF METRICS	ADJ 205	WEAN RATIO	WEAN ADG	WEAN\$	ADJ 365	YRLG RATIO	POST WEAN ADG	WPDA	ADG\$
	744	122	3.18	PLAT	1243	111	3.14	3.16	PLAT
FEED CONV. INFO	RFI	FCR	CONV.\$						
	0.51	5.88	SILVER						

One of the highest gaining bulls, earning him massive WW and YW indexes.





74

HWY 406H

Scurred 2020-05-18 HWY 406H Black 50% Simmental, 25% Angus

Off Odin U5 RCC Predestined 7S
KWA ODIN 29A Red 5014-C
KWA MS ENTICER 45Y

BW: 102 lbs. AOD: 5 Dam Index: 101.4 Doc: 3 CE: 2

PERF METRICS	ADJ 205	WEAN RATIO	WEAN ADG	WEANS	ADJ 365	YRLG RATIO	POST WEAN ADG	WPDA	ADG\$
	733	119	3.08	PLAT	1185	105	2.88	2.97	PLAT

FEED CONV. INFO	RFI	FCR	CONV.\$
	0.01	5.77	GOLD

PERF METRICS	ADJ 205	WEAN RATIO	WEAN ADG	WEANS	ADJ 365	YRLG RATIO	POST WEAN ADG	WPDA	ADG\$
	884	147	3.84	ELITE	1080	96	1.92	2.7	GOLD

FEED CONV. INFO	RFI	FCR	CONV.\$
	0.41	5.58	GOLD

75

HWY 496H

Polled 2020-06-01 HWY 496H Black Composite

Org 105-B

Red 5823-C

BW: 96 lbs. AOD: 5 Dam Index: 105.7 Doc: 3 CE: 2





HWY 549H

Polled 2020-07-04 HWY 549H Black 25% Angus

PM Thunderbird 14'14-B

HWY Thunderbird 7312

Red 4241-B

Red 3117-A

BW: 95 lbs. AOD: 6 Dam Index: 101.7 Doc: 3 CE: 2

PERF METRICS	ADJ 205	WEAN RATIO	WEAN ADG	WEAN\$	ADJ 365	YRLG RATIO	POST WEAN ADG	WPDA	ADG\$
	813	136	3.5	ELITE	1398	125	3.62	3.57	ELITE
FEED CONV. INFO	RFI	FCR	CONV.\$						
	0.33	5.07	PLAT						

This Hwy Thunderbird 7312 son kicks it in all categories with one of the highest WW/YW combos. This sire has risen to the top in our program with 50% of his progeny being selected to stay in the herd, which marks him as one of the highest ELITE reference sires we are using today. It should be no surprise that this son ranks as ELITE and PLATINUM as well for everything we measured him for in our program.



HWY 557H

Polled 2020-07-04 HWY 557H Black Composite

HWY 7490E

Red 3326-A

Red 3215-A

BW: 105 lbs. AOD: 7 Dam Index: 103.8 Doc: 3 CE: 1

PERF METRICS	ADJ 205	WEAN RATIO	WEAN ADG	WEAN\$	ADJ 365	YRLG RATIO	POST WEAN ADG	WPDA	ADG\$
	799	135	3.39	PLAT	1285	115	3.12	3.23	ELITE
FEED CONV. INFO	RFI	FCR	CONV.\$						
	0.24	4.94	ELITE						



Like you, we believe success is built on hard work and strong communities.

And that's why we're so proud to support Highway 21 Group Bull Sale.

Darcy Waddle

Director of Agricultural Markets (Central Alberta)

Cell 403-302-7664 | Phone 403-340-7240

Fax 403-340-7307

Visit RBC.com/rbccommunity



© / ™ Trademark(s) of Royal Bank of Canada.

124827 (01/2022)





HWY 4491H

Scurred HWY 4491H Black 50% Simmental

ELLINGSON LEGACY M229
MR NLC UPGRADE U8676
MS NLC MOJO S6119 B

Doc: 2 CE: 1

FEED CONV. INFO	RFI	FCR	CONV.\$
1.22	6.35	Silver	

PERF METRICS	ADJ 205	WEAN RATIO	WEAN ADG	WEAN\$	ADJ 365	YRLG RATIO	POST WEAN ADG	WPDA	ADG\$
	689	110	2.83	GOLD	1208	107	3.21	3.02	PLAT

FEED CONV. INFO	RFI	FCR	CONV.\$
0.4	5.34	PLAT	



HWY 5290H

Polled 2020-05-08 HWY 5290H Red Brockle Face 25% Angus

RCC Predestined 7S
HWY Predestined 7052E
Red 5488-C

Yel 2070-Z

BW: 108 lbs. AOD: 8 Dam Index: 101.7 Doc: 3 CE: 1





HWY 8042H

Polled 2020-03-22 HWY 8042H Black 50% Simmental, 25% Angus

Olf Odin U5

PM Thunderbird 14'14B

KWA ODIN 29A

Red 8042-F

KWA MS ENTICER 45Y

Red 4207-B

BW: 87 lbs. AOD: 2 Dam Index: 101.7 Doc: 3 CE: 2

PERF METRICS	ADJ 205	WEAN RATIO	WEAN ADG	WEANS	ADJ 365	YRLG RATIO	POST WEAN ADG	WPDA	ADGS
	640	106	2.7	GOLD	1120	105	3.19	2.83	PLAT

FEED CONV. INFO	RFI	FCR	CONV.\$
	0.13	6.44	SILVER



HWY 8209H

Polled HWY 8209H Black 50% Angus

HF Thunderbird 146Y

PM THUNDERBIRD 14'14

KFC 205 Valley 9703W

BW: lbs. AOD: Dam Index: Doc: 3 CE: 3

FEED CONV. INFO	RFI	FCR	CONV.\$
	-1	5.47	PLAT



COMPOSITE REFERENCE SIRES

Name	Breed	Sire BW	Progeny	Progeny BW AVG"	WADG	WW Index	YADG	YW Index	Wean-Yrlg
KWA Odin 29A	Simm	75	278	85	2.46	104	2.50	103	2.48
PM Thunderbird 14'14	Angus	88	180	83	2.45	103	2.53	103	2.57
DVE Davidson Justmore 43Y	Gelbvieh	83	143	88	2.56	106	2.32	102	2.17
HWY Odin 8634F	Cross	85	28	94	2.36	96	2.62	101	2.61
Org 105-B	Cross	59	24	84	2.30	97	2.57	102	2.35
Thunderbird 7312	Cross	98	23	95	2.75	111	2.83	107	2.71
ULTRA Dictator 16B	Simm	90	17	93	2.64	104	2.76	105	2.79
SKORS High Roller 94B	Simm	82	14	101	2.64	104	2.71	103	2.66
HWY Thunderbird 8703	Cross	83	14	90	1.92	87	2.39	101	2.37
VALLEYMERE TTT Mandate 113B	Angus	86	10	94	2.59	111	2.71	108	2.72
ATLASTA Upward 75B	Angus	88	9	95	2.62	104	2.63	102	2.66
Red 6218	Angus		9	92	2.63	105	2.56	104	2.26
MR NLC Upgrade U8676	Simmtal	109	6	84	2.42	97	2.60	103	2.58
Red 7490	Cross	90	5	99	2.94	121	2.98	106	2.90
HWY Predestined 7052E	Cross	102	5	95	2.41	97	2.97	105	3.16
HWY Odin 8158F	Cross	83	4	93	2.46	99	2.60	100	2.76



KWA Odin 29A

This Simmental Sire hold the record in our herd with 279 progeny and 103 retained for the herd. He bred for 8 years naturally which speaks to his longevity and structure. He ranks in the top 4% for BW in CSA. All his calves born here have averaged 85 lbs and overall have a 104% index for WW and 103% index for YW. Check out his 11 descendants in this year's bull pen.



SKORS High Roller 94B

We purchased this Simmental sire in 2015. We thought enough of him to AI him to 500 head of second calvers the following year so we could see how his calves would perform. The females calved on grass with no issue. Unfortunately, due to a loss of the DNA, we never got a chance to link the specific calves to him. However, assuming at least 50% of them were his, the pen noticeably had extra length, depth and exhibited tremendous performance in the feedyard and knocked the socks off our other ranch calves that year. He still ranks in the top 5% for CE, 10% for BW, top 30% for WW and 20% for YW in the Simmental Assoc. In our herd, he is ranked as a PLATINUM SIRE with a 107.8 index, not to mention most all of his calves tested have been in the top 50% for feed efficiency, and not one of them have been assisted at birth.

HIGHWAY 21 GROUP CHROLAIS
& SIMM/ANGUS BULL SALE



Carcass Progeny	CW	Carcass ADG	REA	Musc Index	Marb	Fat	LMY %	Prime %	AAA %	AA %	YG1 %	YG2 %	YG3 %
43	910	1.70	14.96	1.64	417	0.50	57.44	5%	40%	51%	21%	49%	16%
22	954	1.80	14.03	1.47	485	0.66	52.85		77%	23%		41%	27%
57	886	1.73	14.18	1.60	416	0.53	56.05		30%	61%	7%	53%	33%
11	862	1.57	13.33	1.55	396	0.40	57.56		45%	55%	27%	73%	
8	871	1.55	13.90	1.60	397	0.57	54.59		25%	63%	25%	63%	13%
4	898	1.65	13.43	1.50	418	0.52	55.17		50%	50%	25%	75%	
2	1018	1.83	15.45	1.52	379	0.50	56.71			100%	50%	50%	
4	1021	1.81	15.40	1.51	375	0.47	57.13		25%	50%		75%	
3	834	1.45	13.53	1.62	398	0.44	57.53		33%	67%	33%	67%	
0													
0													
4	900	1.59	13.83	1.54	400	0.60	54.24		50%	50%	25%	25%	50%
1	949	1.68	15.50	1.63	378	0.40	59.40			100%	100%		
0													
1	905	1.59	13.70	1.51	405	0.60	54.01		100%			100%	
0													



MR NLC Upgrade U8676

Looking at this U.S. sire that we have used in our AI program, there is no doubt we have liked the looks of his calves as well. Although he had a 109 BW himself, he ranks in the top 20% for CE, and 35% for BW. Our records of CE in our program back this up with an average BW of 84 lbs. in our herd. He shows tremendous wean to yearling performance. He ranks in the top 2% for WW and YW in the Simmental Assoc and top 4% for marbling.



PM Thunderbird 14'14

This Angus Sire is a descendant of the famous Hamilton Farms Kodiak. Angus ranks him in the top 25% for CE, top 15% for WW and top 7% for YW. He ranks second in our herd for progeny born at 179 head, 43 of them retained in our herd with an average of a 103% index for both WW and YW. He is the sire of one of our rising stars Hwy Thunderbird 7312 which will continue to add more of his grandsons/dams to our program. Thunderbird runs deep here with 10 offspring selling.



GrowSafe RFI Quick Facts

FREQUENTLY ASKED QUESTIONS

What are the benefits of selecting for low residual feed intake (RFI) animals*:

- Reduction of overall feed intake by up to 12% while maintaining the same level of production
- Reduction in the maintenance requirements of the herd by 9-10%
- Improvements in the feed conversion rates of calves of from 9-15%
- Reduction of manure NPK production by 17% and greenhouse gas emissions such as methane, by 30%

What does this mean for a cow herd?

By selecting for RFI, or introducing several low RFI bulls into your herd, feed-related savings will continue to increase. Several years of genetic selection will improve the baseline feed efficiency of the ranch and savings will continue to transfer to the cow herd as replacement heifers are retained.

What is Residual Feed Intake (RFI)?

Residual feed intake (RFI) is a measure of feed efficiency that is calculated as the difference between an animal's actual feed intake and its expected feed intake. RFI is independent of body weight and size. Differences in the trait cannot be detected by physically looking at an animal, it requires accurate and simultaneous measurement of an animal's feed intake and body weight. Animals with low RFI values are more efficient than those with high RFI values.

What is the heritability of RFI?

RFI is a moderately heritable trait (26-58%), and when used as a selection tool, will result in progeny that consume less feed for the same level of production. RFI is independent of growth, body size and other performance traits, meaning that selection for animals with low RFI will lead to reduced feed intake and improved feed efficiency without compromising body size or growth.

*Residual Feed Intake (Net Feed Efficiency) in Beef Cattle. (2006, July). Retrieved January 3, 2019, from [https://www1.agric.gov.ab.ca/\\$department/deptdocs.nsf/all/agdex10861/\\$file/420_11-1.pdf?OpenElement](https://www1.agric.gov.ab.ca/$department/deptdocs.nsf/all/agdex10861/$file/420_11-1.pdf?OpenElement)
© 2019 GrowSafe Systems Ltd.
All rights reserved.
04/19 GS190115-NA

Does selection for low RFI animals, that eat less, result in reduced performance and average daily gain (ADG)?

No, selection for RFI does not result in cattle with reduced performance and ADG. Efficient and inefficient cattle can have both high and low ADGs. To prevent a decline in performance, it is important to select for low RFI animals with sufficient ADG. GrowSafe does not recommend single trait selection.

How is RFI calculated?

RFI is calculated as the difference between an animal's actual feed intake and their expected feed intake. An animal's expected feed intake depends on its body size and growth rate. The calculation for expected feed intake is comprised of data from the entire contemporary group using the animals' dry matter intake, mid-test metabolic body weight and average daily gain data. The GrowSafe data analysts use the data captured automatically and continuously by the Feed Intake technology to determine each individual animal's actual feed intake, which is compared to their expected feed intake. Concurrently, the highly accurate partial body weights collected from the GrowSafe Beef® technology are used to determine each individual animal's average daily gain and body weight.

Example:

	Expected Intake	Actual Intake
Animal A	8.5	10
Animal B	10	9.5

- Animal A: $RFI = 10 - 8.5 = 1.5$
- Animal B: $RFI = 9.5 - 10 = -0.5$

Animal B is more efficient because it has a lower RFI value and because it eats less than expected for its size and level of production.



Cow/Calf Health and Management Solutions (CCHMS) collaborates closely with the Highway 21 Group to manage their entire herd through an integrated and comprehensive health and production management program. Decisions are made using individual and ancestral progeny data that promotes performance and feed efficiency, while recognizing the importance of welfare, fertility and phenotype in replacement selection. Detailed data is collected on each individual animal at all key health and production points and is kept in a secure web-enabled database called Herdtrax®. Seamless transfer of the bulls' records (including ongoing health, parentage and performance data of future ancestral progeny) can be transferred directly to buyers that are already enrolled on the Herdtrax® management network, and this will allow for the continual flow of data back and forth between the ranch and the buyer. This sharing of information will provide insight into which bulls are thriving in the buyer's program and guide future purchasing decisions. This also provides invaluable feedback to the source ranch to help build on the indexing of reference bloodlines.

Vaccination Program

Highway 21 Group follows a detailed vaccination program to help ensure that the cattle stay healthy and continue to thrive after being delivered:

Calves are vaccinated within the first 10 days of life:

- IBR/PI3/BRSV (MLV) – Inforce 3® (intranasal)
- *Mannhaemia hemolytica*, *Pasteurella Multocida* – Once® PMH IN (intranasal)

Calves are vaccinated in the spring with the following:

- IBR/PI3/BRSV (MLV) – Inforce 3® (intranasal)
- BVD (MLV) and *Mannhaemia hemolytica* – One Shot® BVD
- 7 way Clostridial and *Histophilus Somnus* – Ultrabac® 7/Somnubac®

Calves are vaccinated at weaning with the following:

- IBR/PI3/BRSV/BVD (MLV) and *Mannhaemia* – Bovi-Shield® GOLD One Shot®
- 7 way Clostridial and *Histophilus Somnus* – Ultrabac® 7/Somnubac®
- Parasite Control – Topical ivermectin.

Replacement heifers are vaccinated pre-breeding:

- IBR/PI3/BRSV/BVD (MLV) – Bovi-Shield® GOLD FP®5 (Fetal Protection)

Cows, bred heifers, bulls are annually vaccinated post-breeding:

- IBR/PI3/BRSV/BVD (MLV) – Bovi-Shield® GOLD FP®5 (Fetal Protection)

Bulls prior to the sale have been vaccinated and treated with the following:

- *Fusobacterium Necrophorum* – Fusoguard™ (footrot and liver abscess vaccine)
 - Two doses given twice 60 days apart
- Lice Control – Permethrin

Bulls prior to the delivery will be boosted, and ready for turnout:

- IBR/PI3/BRSV/BVD – Bovi-Shield® GOLD FP®5

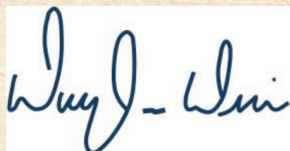
Breeding Soundness Examination

Each bull has passed an extensive *Bull Soundness Examination* which includes soundness of structure, palpation of testis and internal sex glands, scrotal circumference, examination of the penis as well as verifying sufficient sperm motility and morphology. Bulls that are considered to be 'Satisfactory' are competent to breed cows.

CCHMS is proud to work with Highway 21 Group and if there are any questions, please contact me and I can always find the time to talk about genetics and this remarkable, dynamic industry.

Congrats on an outstanding pen of bulls!

Dr. Waylon Wise BSc. Ag, DVM





When the Miller family and I sat to discuss nutrition for the Purebred Cattle we both had one clear goal in mind, "Feed the cattle in a safe and responsible way in order to maximize the genetic potential of these Bulls when they go to their new homes".

These cattle have been raised on a high roughage diet with adequate energy in order to maintain strong breeding soundness throughout the growing phase. It is highly important that we have a balanced ration with Protein and Energy requirements being met so the fibrolytic and starch digesting bacteria can symbiotically metabolize the feedstuffs provided for these cattle on a daily basis. We believe at Cargill Animal Nutrition that we understand that as well as anybody in the industry with the use of our Beef Max software. I, along with the Miller family have spent an extensive amount of time and effort into understanding the feedstuffs and nutrients they exhibit on the Miller Ranch. Last fall the Miller's got set up with the Cargill Version of Performance Beef in order to measure and verify daily growth and maintenance requirements of these cattle. This technology assists in proper daily feeding management which in turn benefits the cattle by maintaining a consist plane of nutrition in order to meet maturation requirements for these Bulls.

These bulls have been raised on a Chelated Mineral and balanced Vitamin program in order to ensure proper immune responses as well as maximize scrotal development and enhance semen quality. With the costs associated with producing a calf today its highly important that we select a bull that will add profitability to your calf crop by way of "Pounds of Beef." It is also important that the genetics you purchase last as long as possible. These are two key traits you can trust the Miller Family put FIRST when it came to raising and developing these cattle.


Yours Truly

Trevor Moebis
Ruminant Specialist
Cargill Animal Nutrition



Around the Ranch






RECONCILING IS FOR YOU!
Managing Your RISK is
Managing Your EQUITY

Cattle Hedging

FULL SERVICE BROKERAGE

SIGN UP TODAY AND GET A FREE 30 DAY TRIAL WITH ACCESS TO:




- ★ THOUSANDS OF GRAPHS AND CHARTS
- ★ FUNDAMENTAL & TECHNICAL TOOLS
- ★ INDUSTRY REPORTS & ANALYSIS

**PROTECT AGAINST
RISING FEED
COSTS.**

866-HEDGE-11
(866-433-4311)

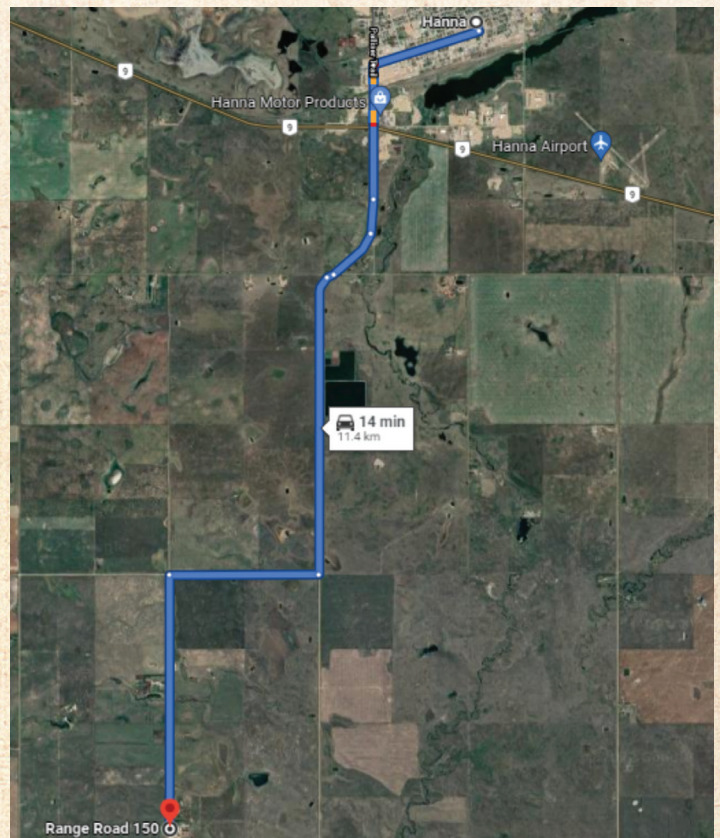
CATTLEHEDGING.COM





Notes

DIRECTIONS TO THE RANCH



Terms & Conditions

Terms:

The terms of the sale are cash or cheque, payable at par at the sale location. The right of property shall not pass until after settlement has been made; no invoicing on buyers in attendance, unless previous arrangements have been made. Every animal sells to the highest bidder and in cases of disputes, the auctioneer's decision will be final. Current exchange rates will be announced sale day. All monies are in Canadian funds.

Bidding:

Each animal will sell to the highest bidder... no by-bidding will be permitted. Disputes - Bidding will be reopened between the parties involved in dispute. If no further bidding is made, the buyer will be the person from whom the auctioneer accepted the last bid. The auctioneer's decision on all disputes will be final.

Announcements:

All announcements made from the auction block will take precedence over the printed matter in the catalogue. Buyers are therefore cautioned to pay close attention to such disclosures.

Breeders Guarantee:

The breeders guarantee is laid out at the start of the catalogue. Furthermore, no guarantee is given that semen collected from a bull will freeze.

Exception Guarantee:

In cases where the animal is subjected to any hormonal or surgical reproduction techniques after the sale, this guarantee shall be null and void.

Certificate of Registration:

Each animal will carry papers issued by the Canadian Charolais Association. A certificate of registry duly transferred will be furnished to the buyer for each animal after payment has been made.

Delivery:

We will assist in arranging transportation wherever possible. Each animal becomes the risk of the purchaser as soon as sold.

Pedigree Estimates

Pedigree Estimates (PE) are created on the projected mating of the animal's sire and dam based on averages of the two, creating estimated values that do not hold the same accuracy

of actual EPDs issued from the association and should be used as such.

Liabilities:

All persons attend the sale at their own risk. The seller, facility owner and sale manager assume no liability, legal or otherwise, for any accidents that occur. It is understood that T Bar C Cattle Co. (2013) Ltd. is acting only as a medium between buyer and seller and is not responsible for any failure on the part of either party to live up to his obligations. Neither does T Bar C Cattle Co. (2013) Ltd. assume any financial obligations to collect or enforce collection of any monies between parties and any legal action that may in exceptional cases be taken must be between the buyer and the seller. T Bar C Cattle Co. (2013) Ltd. assumes no responsibility for any credit extended by the seller to the buyer. The buyer must look to the seller for fulfillment of all guarantees and representations made hereunder.

Rights and Obligations:

The above terms and conditions of the sale shall constitute a contract between the buyer and seller and be equally binding to both. Resale of animals following purchase in this sale shall constitute a separate transaction and the rights and obligations of the two parties connected thereto are not covered by the terms and conditions of this sale.

Phone, Mail, Wire Bids:

Bidders unable to attend the sale may phone, wire or mail their bids and instructions to the sale managers, auctioneer or special representatives. Bids must be received in sufficient time prior to the sale.

Insurance:

If you wish to obtain your own insurance, we advise you contact Larry Toner with Stockmen's Insurance at 306-834-7652 to learn more about their terms and rates.

Errors:

All announcements at sale time, written or oral, supersede any written material in the catalogue.



**Return Undeliverable
Canadian Addresses To:**

T Bar C Cattle Co. Ltd.
Box 2330
Warman, SK S0K 4S0

